



Software Installation Instructions: v2.5 SP2

Cascade v2.5 SP2 minimum computer requirements:

The computer used to run the Cadwell Cascade, Elite, or PRO is an integral part of the neuromonitoring system. For optimum performance of the system use a computer that meets the following criteria.

	Minimum	Recommended
Operating System	32-bit Windows XP Professional SP3 32-bit Windows 7 (Please see Configuring Cascade for Windows 7 for additional setup instructions, document 369028-626 on DVD)	
Processor	2.13 GHz Dual Core processor, Cascade 2.5 will run much slower on computers with single-core processors.	
Hard Disk Drive	80 Gigabytes Capacity, 5 GB free-space	40 GB free space
Memory (RAM)	3 GB	
Archive Device	Any Windows supported device	
Graphics	1024 x 768 resolution; 16 MB, 32-bit color depth (<i>supported</i> , but not recommended)	1600 x 900; 64 MB ATI Graphics
Base Unit Communication	10 Base-T Ethernet connection	
Network Connectivity	Second Ethernet connection (e.g., Ethernet card) required for simultaneous connection to base unit and network	
Regulatory Requirements	U.S. and Canada: Equipment must meet UL1950 or IEC950 European Union: Equipment must meet EN60950	

Please read all instructions prior to performing the upgrade.

1. **Version 2.5 SP2 will not load on Windows 2000, or Windows 98 and has not been tested on Windows 2008 Server, Windows Vista, or 64-bit operating systems.**
2. **Reader systems can be running v2.2 or 2.5 to read data files or remote monitor.**
3. **You should be logged-in as an administrator on your computer when you perform the installation.**
4. **The current version of Cascade should be completely removed before starting the v2.5 installation process. Instructions for removing the current version of Cascade are included in this document.**
5. **Internet access is recommended during installation.**
6. **Version 2.5 verifies and/or installs the following applications before installing Cascade v2.5:**
 - **Microsoft .NET Framework v3.5 SP1**
 - **Microsoft .NET Framework 4 Client Profile**
 - **2005 and 2008 Microsoft C++ redistributables**
 - **Adobe Flash version 9 or higher.**
 - **Microsoft Windows Media Player 11**
 - **Cascade Device Flash Utility**
 - **Windows Installer 3.1 or higher**

New PC Installation Notes:

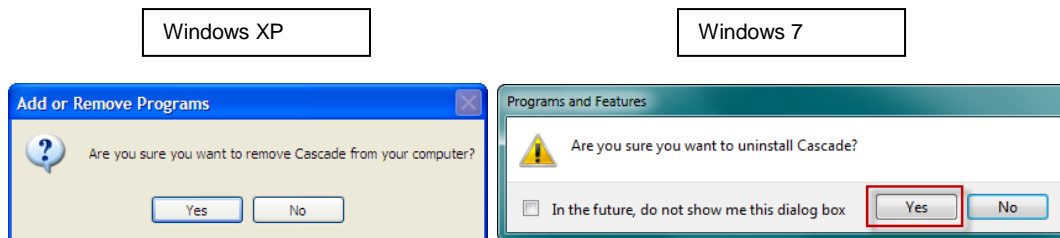
If you purchased your new PC from Cadwell, the Cascade software is already set up.

If your computer was purchased from a source other than Cadwell, you will need to follow these instructions to install your Cascade software and then you will need to [configure the network card](#). Instructions for configuring the network card are in the Cascade Help File.

Installation Instructions

First uninstall the current version of Cascade. This will not remove your unique procedure setup files, report templates, or patient data files.

1. Click on the Start button (or Start Orb) and select Control Panel.
2. Open Add and Remove Programs in XP or Programs and Features in Windows 7.
3. If XP, select Cascade and click the Change/Remove button. Click yes. If Windows 7, double click on Cascade and then select Yes when prompted to uninstall Cascade.

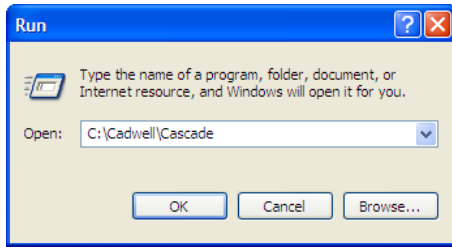


- Follow the instructions on the screen to remove the Cascade application.
- Close Add and Remove Programs and the Control Panel windows.

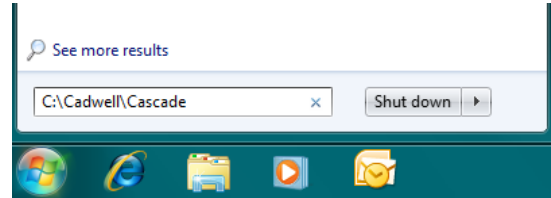
Next remove any leftover application files from the Cascade directory.

- If XP, Click Start>Run. If Windows 7, click the Start Orb, then place your cursor in the "Search programs and files" text field.

Windows XP

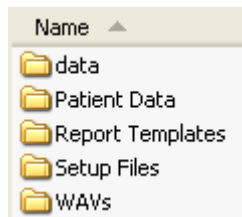


Windows 7

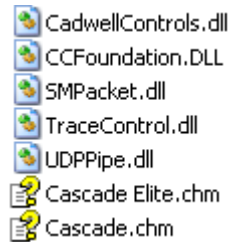


- Type in C:\Cadwell\Cascade, Click OK.
- Leave any folders in this directory such as Patient Data, Setup files, Data, Report Templates and any other directories (i.e., Folders).** Do not remove files from within these folders. Excluding the folders, highlight any files in this directory and delete them.

Keep ALL Folders



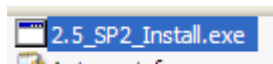
Delete Files NOT in a Folder



- Close the Cascade folder window.

Now install the applications for Cascade v2.5 SP2. Begin by opening the Cascade version 2.5 SP2 installation DVD on your PC.

- If the DVD does not autorun, double click My Computer, Open the Optical Drive, then double left click on the **2.5_SP2_Install.exe** file.

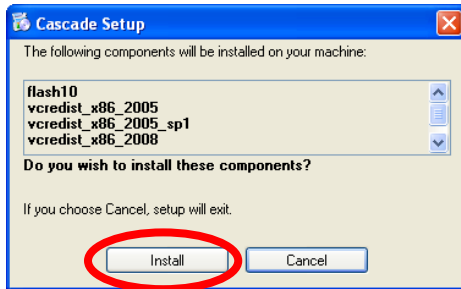


Wait for 3-5 minutes while the installer extracts all of the installation files to:

C:\Cadwell\Cascade_25_SP2_Files.

This will ensure that all of the installation files, third party software, and drivers are accessible for future access on your PC. Once the automatic extract is completed, the Cascade Setup will begin automatically.

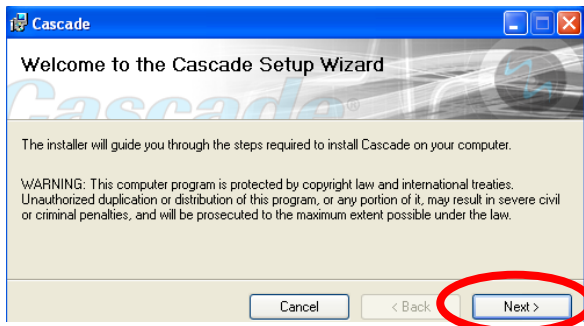
11. If .Net 3.5 SP1 is not already installed on your computer, you will first need to agree to their end user license agreement. Click **Install** when you receive the following prompt regarding installation of the prerequisite applications and software updates.



12. Microsoft's .NET installer will install the necessary prerequisite applications and software updates. This may take several minutes, depending on the number of updates needed and the speed of your computer.
13. Installing .NET will prompt for a reboot. If prompted to restart your PC, restart, then open the Cascade version 2.5 SP2 installation at:

C:\Cadwell\Cascade_25_SP2_Files

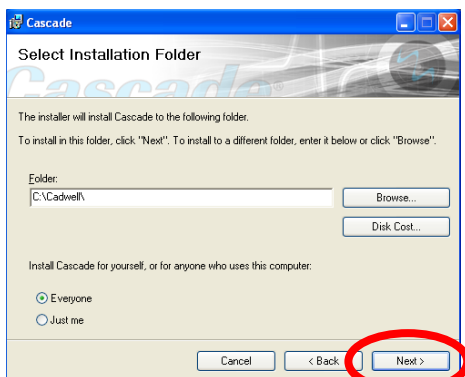
Double left click on the **setup.exe** file. The setup file will begin installing again, but will skip the .NET 3.5 SP1 install. After the prerequisite applications and software updates are installed, the Cascade Setup Wizard will begin automatically. Click **Next**.



14. Read the Release Notes. Then click the **Next** button again.

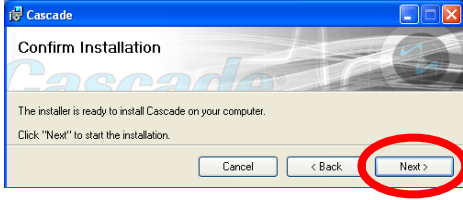
Note: Cascade automatically copies a documents folder to the C:\Cadwell\Cascade directory. This folder will contain a copy of the release notes along with other supporting documentation.

15. Confirm or change the destination folders and click the **Next** button. If this is a Windows 2003 Server being setup as a Reader system click the **Browse** button to browse to the drive letter on which you wish to install the Cascade and the Quickmed report software. See step 21 if you change the installation directory.



Note: If you change the directory to which you install Cascade, you will need to configure the Cascade registration configure file and re-register the files after completing the install. Instructions for this process begin at step 21.

- Confirm that you wish to install Cascade version 2.5 SP2 by clicking the **Next** button.



- The Cascade application will take several minutes to install. When the InstallShield installation is complete, click the **Close** button to exit the installation process.



- Start the Cascade program by double clicking the Cascade icon on the Windows Desktop.
- Select **Start New Procedure**. The Device Flash Utility will begin an automatic update of your base unit firmware version. When the Firmware update is complete, power OFF the base unit, wait for 10 seconds, then power ON the base unit.
- Verify **hardware version numbers** by selecting **About Cascade...** from the **Help** menu.

Hardware Type	Cascade Version	Base Version	Junction Board SW	Estim Board SW
16-Channel Cascade	2.5 SP2	3.27	2.2	5.8 or 5.9
32-Channel Cascade Elite	2.5 SP2	3.86	2.2	5.9 If ES-IX, v0.9
Cascade PRO (16 or 32)	2.5 SP2	1.09	2.2	ES-IX, v0.9

Updating Register Cadwell tool for installations to non-default directory (e.g., Windows Server 2003)

- Open **RegisterCascade.exe.config** from your chosen Cascade installation directory in a plain text editor.
- Once the text file is open, perform a Find and Replace. You will search for `c:\Cadwe11` and replace that text with your selected installation directory. The directory setting should be replaced in 5 locations.
- As an example, if I changed the installation directory to `P:\Cadwe11\`, I would open **RegisterCascade.exe.config** from `P:\Cadwe11\Cascade`. Within the text file, I would search for `C:\Cadwe11` and replace it with `P:\Cadwe11`.
- Open the RegisterCascade tool by double-left clicking on **RegisterCascade.exe**.
- Select **Register All**.
- After the registration process completes, close the Register Cadwell tool.