



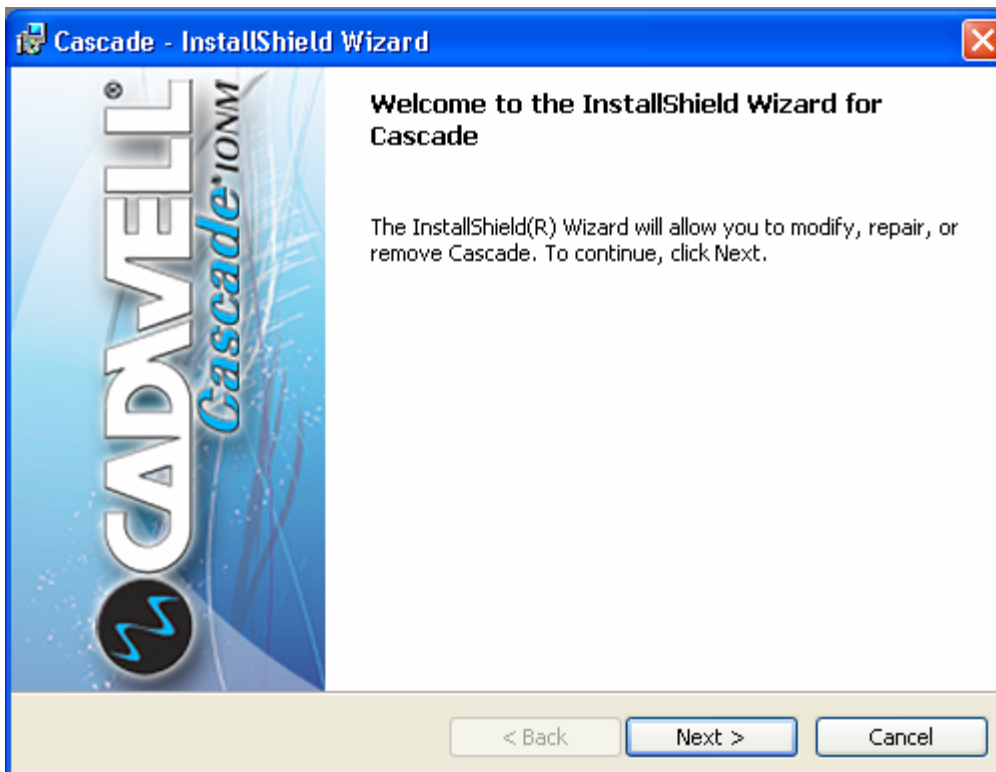
Software Installation Instructions Cascade v2.2

Please read all instructions prior to inserting the upgrade CD.

- Version 2.2 is compatible only with the Windows XP operating system running service pack 2 or later.
- Version 2.2 will not load on Windows 2000, or Windows 98 and has not been tested on Windows Vista.
- You must have administrative rights on your computer in order to complete the installation.

Installation Instructions

1. Insert the Cascade 2.2 CD into your computer. Cascade unpacks the installation file. The main installation menu will be displayed.



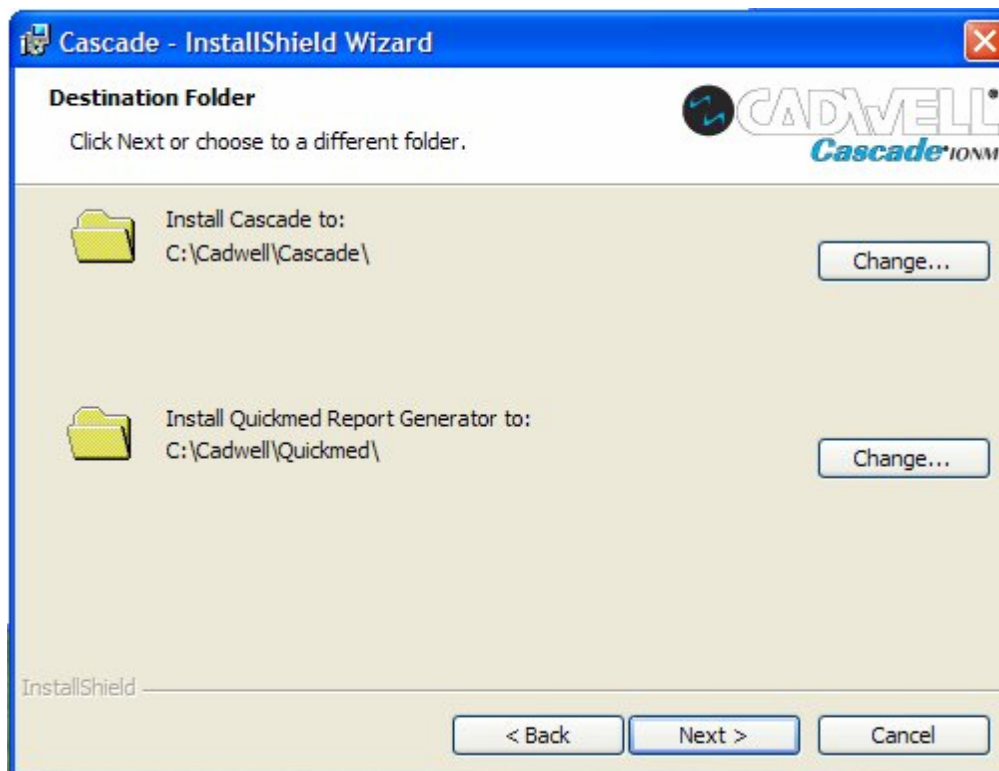
Note: If the installation menu does not appear automatically, click the Start button and select Run. In the box provided type D:\Setup.exe and then click OK. (D is the letter typically assigned to your CD drive but it could be a different letter depending on the configuration of your computer).

2. Click the Next button, read the Release Notes. Then click the Next button again.

Note: Cascade software updates 2.1 and later automatically copies a documents folder to the C:\Cadwell\Cascade directory. This folder will contain a copy of the release notes along with other supporting documentation.

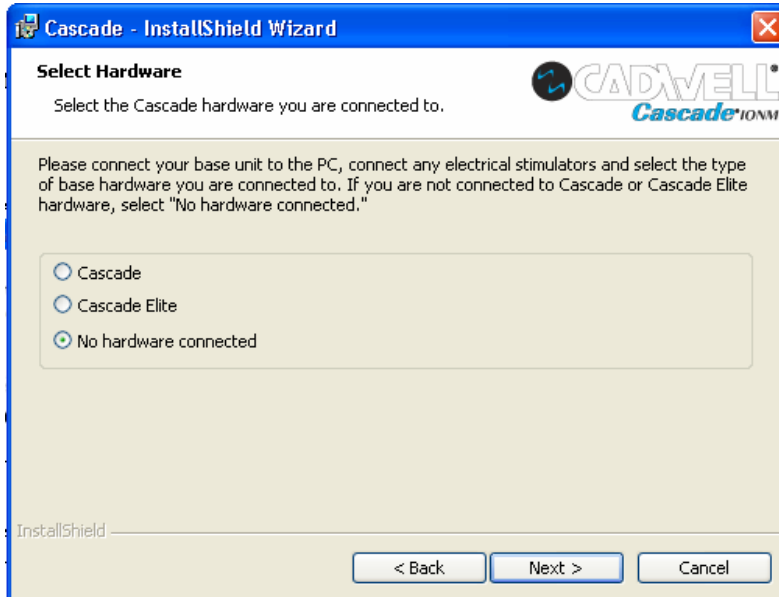


3. Confirm or change the destination folders and click the Next button. If this is a Windows 2003 Server being setup as a Reader system click the Change buttons to browse to the drive letter you wish to install the Cascade and report software onto.

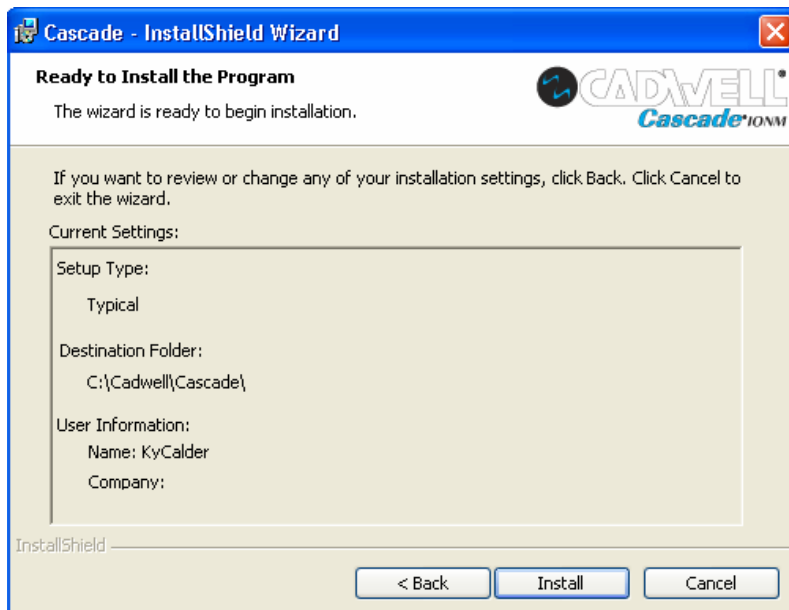


4. Select the type of base unit the computer is connected to or choose the "No hardware connected" option and click the Next button. "Cascade" is the 16 channel system; the "Cascade Elite" is the 32 channel system. Readers systems should select "No hardware connected". Make sure the base unit is connected and powered on.

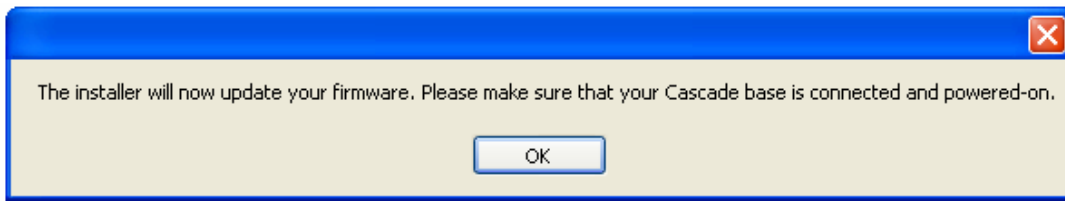
Note: Cascade 16 channel users with the optional trigger-in hardware modification to the base, DTS192-200, this option is not supported in Cascade version 2.2



5. Review the installation settings and click the Install button.



6. If you selected hardware in step 4, connect your Cascade or Cascade Elite base unit, power it on and click OK.



7. When the InstallShield installation is complete, click the Finish button to exit the installation process.
8. After the installation is complete, turn the base unit OFF, wait 10 seconds and then turn the base unit back ON. If no base unit is connected, ignore this step.
9. Start the Cascade program by double clicking the Cascade icon on the Window's Desktop.
10. Verify version numbers by selecting About Cascade... from the Help>About Cascade menu.

Hardware Type	Cascade Version	Base Version	Junction Board SW	Estim Board SW
16-Channel Cascade	2.2	3.22	2.2	4.7 or 5.8
32-Channel Cascade Elite	2.2	3.59	2.2	5.8

† Version 2.2 Junction Board SW on the Cascade Elite is only compatible with Cascade Elite Base Version 3.57 or later and is not backward compatible with earlier versions of Cascade Elite Base firmware.