
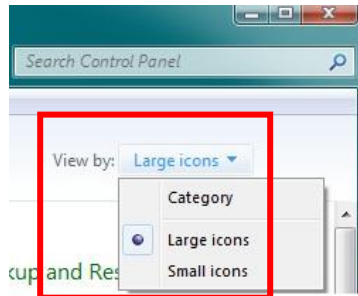


## Configuring Windows 7 for Cascade

This document will describe how to setup Windows 7 for optimal performance of the Cascade program, please configure Window 7 as outlined in the following instructions.

### 1. Turn off the UAC (User Account Control) before installing and licensing Cascade:

- Click the **Start Orb** .
- Click on the **Control Panel**.
- Change the “**View by:**” to “**Large Icons**” or “**Small Icons**”. *Do not use “Category View”.*



- Then click on **User Accounts**.
- In that dialogue box click on “**Change User Account Control Settings**”. Answer “**Yes**” if a prompt is displayed.


#### Make changes to your user account

[Change your password](#)

[Remove your password](#)

[Change your picture](#)

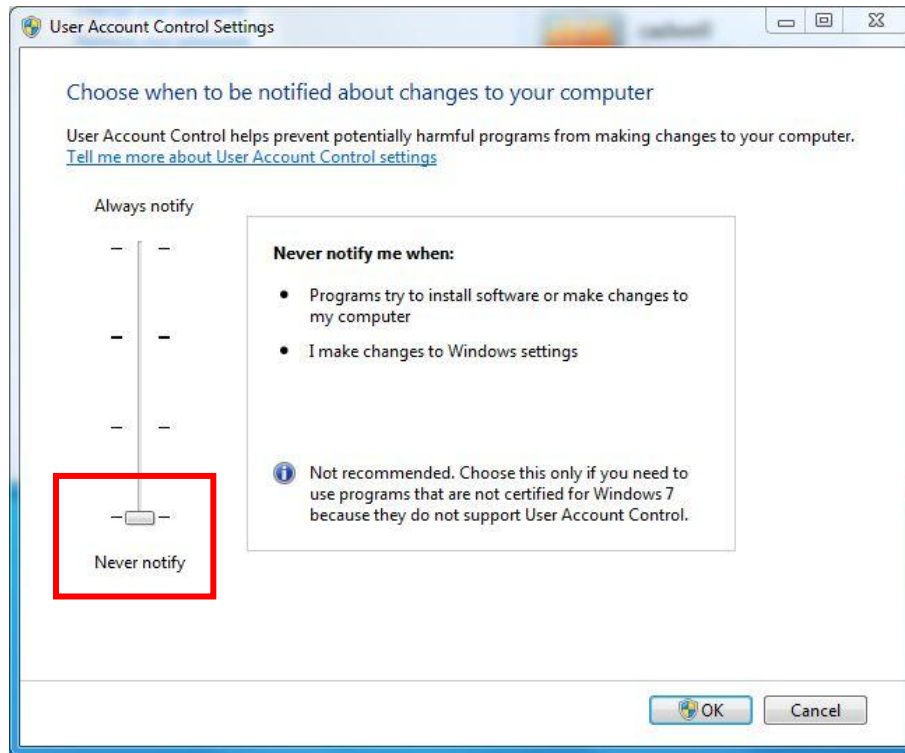
 [Change your account name](#)

 [Change your account type](#)

 [Manage another account](#)


 [Change User Account Control settings](#)

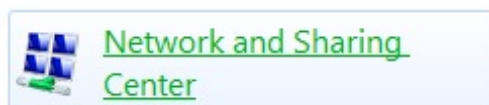
- Move the slider to the “**Never Notify**” position. Click **OK**. *Note the Cascade application can be run with elevated User Account Control settings but should be installed and licensed with UAC set to Never Notify.*



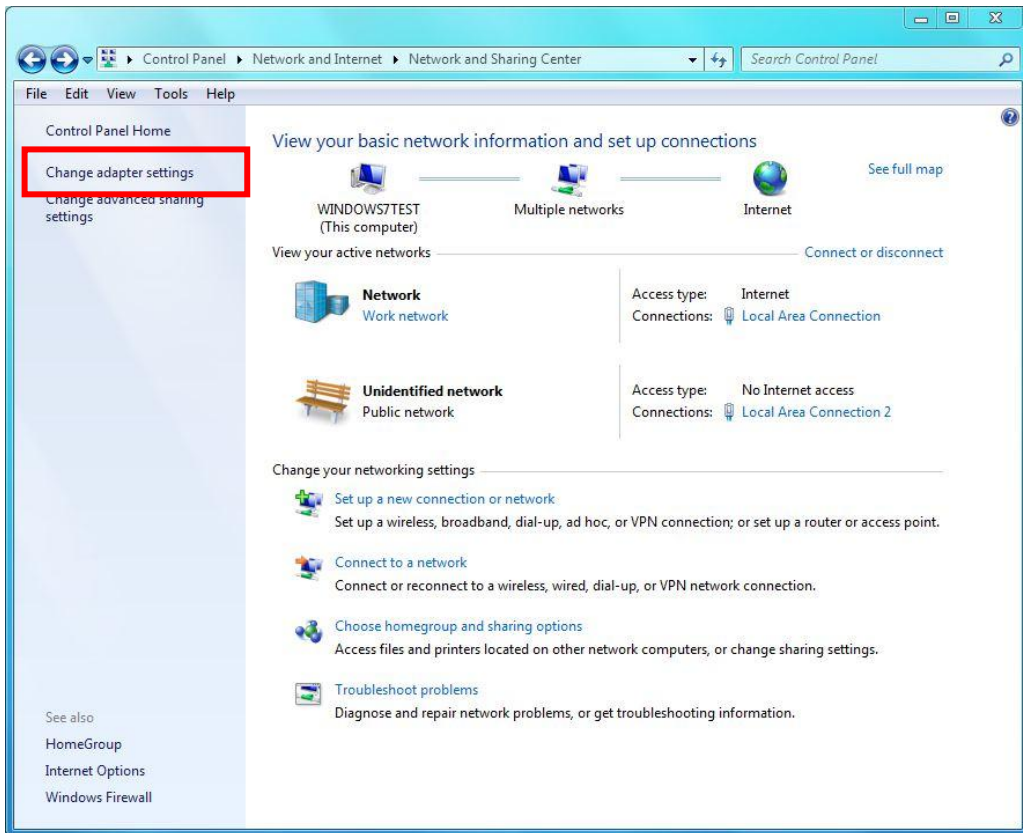
- **Restart** the computer.

## 2. Configure the Network Card:

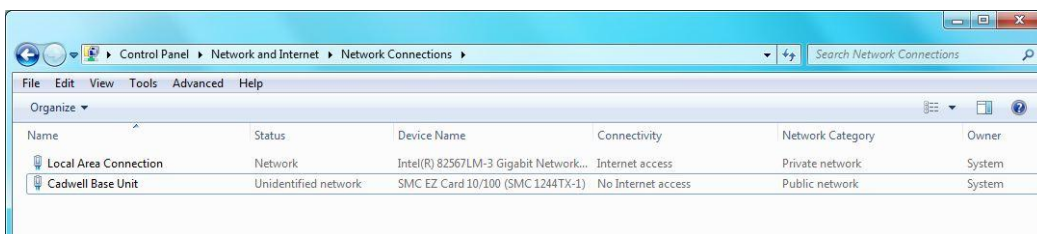
- Click the **Start Orb** .
- Click on the **Control Panel**.
- Change the “**View by:**” to “**Large Icons**” or “**Small Icons**”. *Do not use “Category View”.*
- Click on “**Network and Sharing Center**”.



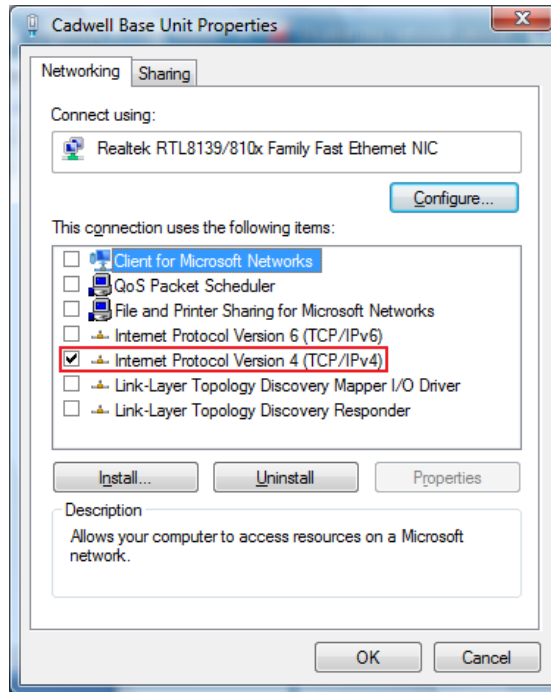
- Then click on “**Change Adapter Settings**” on the left hand task pane. This will show all the network connections available on the computer.



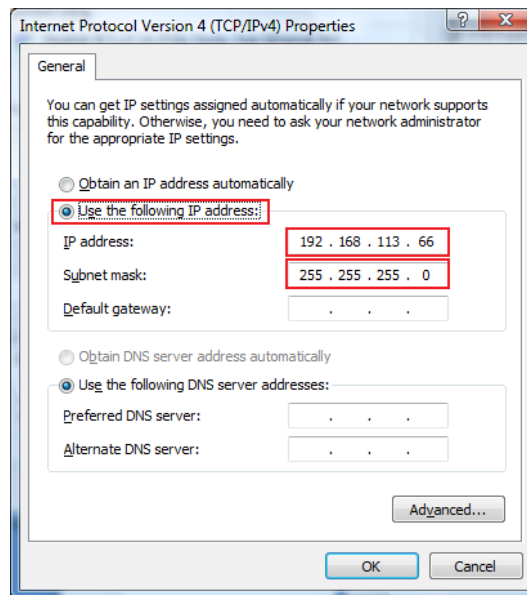
- **Right-click** on the LAN or High-Speed Internet connection that will be used to communicate to the base unit and select “**Properties.**”



- Uncheck all the protocols in the list except for the **Internet Protocol Version 4 (TCP/IPv4)**.

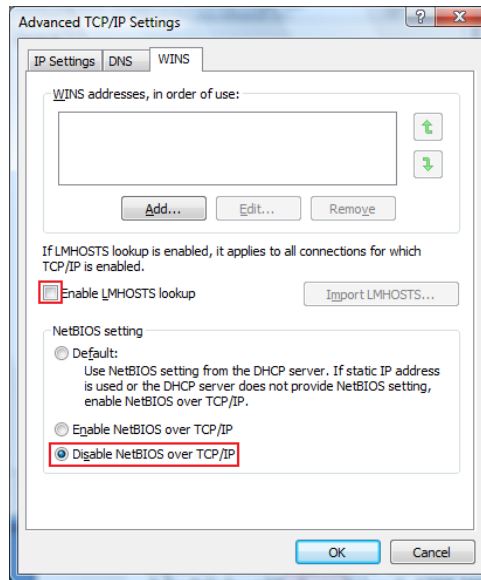


- Then double-click on that protocol and change the radial button from “Obtain and IP address automatically” to “**Use the following address.**”

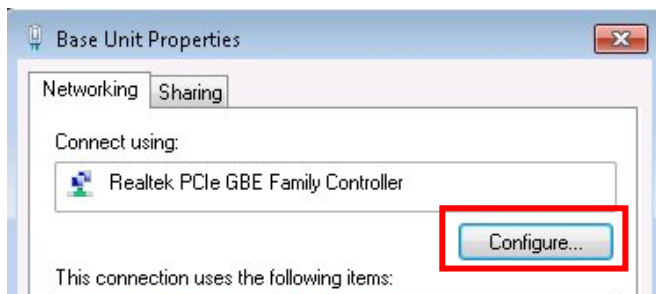


- Input the default Cadwell® IP address used for all our machines. It is **192.168.113.66**. The default Subnet Mask can be used of **255.255.255.0**.

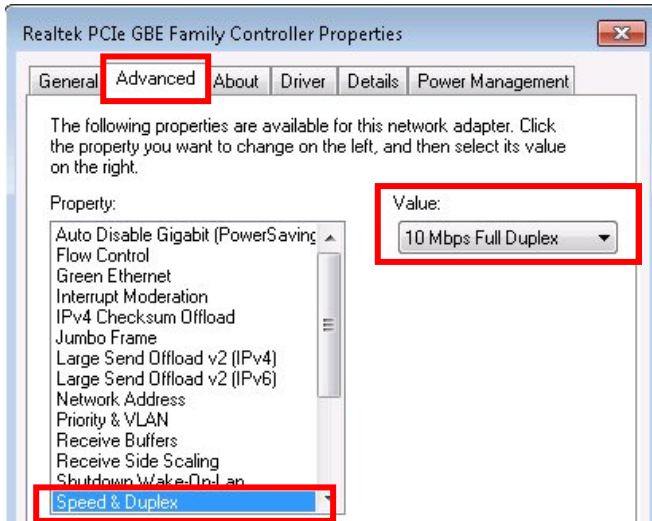
- Once those addresses are added click on the **Advanced** button in the bottom right-hand corner of the screen. Click on the **WINS** tab and uncheck the “**Enable LMHOSTS lookup**” check box and change the Net-Bios setting from Default to “**Disable NetBios over TCP/IP**”.



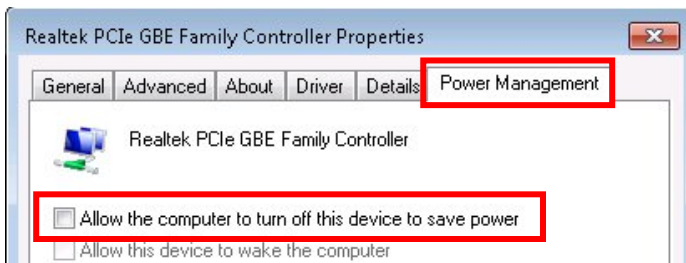
- Click **OK** three times to get back to the network connections page.
- **Right-click** on the LAN or High-Speed Internet connection that will be used to communicate to the base unit and click on “**Properties**”.
- Click on the **Configure** button in the upper left corner.



- Click on the **Advanced** Tab then select the “**Speed and Duplex**” listing. *It might also be displayed as “Media Type, Connection Type or Link Speed & Duplex”. Some Windows 7 systems will have a Link Speed tab.*



- Click the drop down list on the value right and select **10 Mbps Full Duplex**.
- Click on the **Power Management** tab. **Deselect the “Allow the computer to turn off this device to save power”** check box than click **OK**. *Note not all network cards will have a power management tab.*

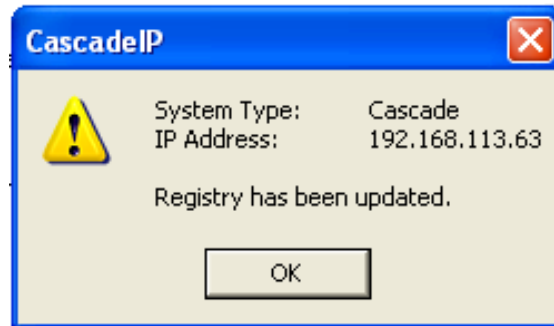


- **Right-click** on the LAN or High-Speed Internet connection that will be used to communicate to the base unit and click on “**Rename**.” Type in **Cascade Base** and press **Enter**.

### 3. Running CascadeIP.exe on Windows 7:

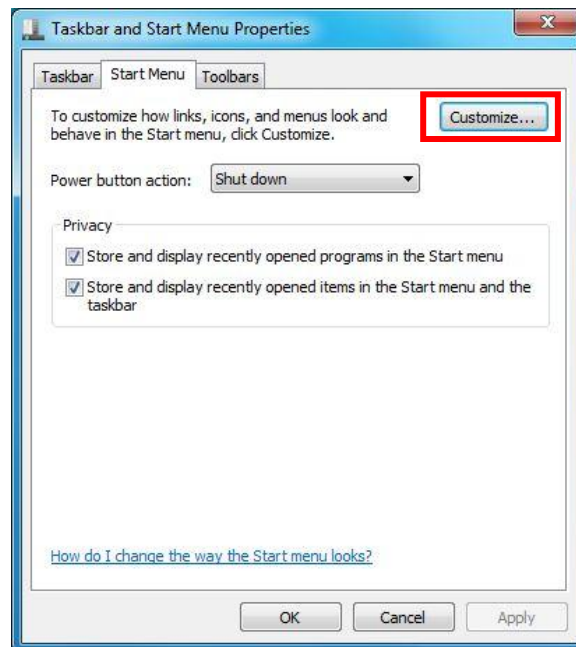
After installation of the Cascade software has been completed you will need to run the `C:\Cadwell\Cascade\CascadeIP.exe` program. The first time you double-left click on **CascadeIP.exe**, you may get an error message: “**The Cascade controller was not detected.**” Immediately thereafter click **OK**, and then double-left click on **CascadeIP.exe** a second time and the registry will be updated correctly.

This program updates the system registry with the IP address of the Cascade Base Unit. See the graphic below for the correct response of running CascadeIP.exe. Once this has been done the Network Card Setup will be complete.

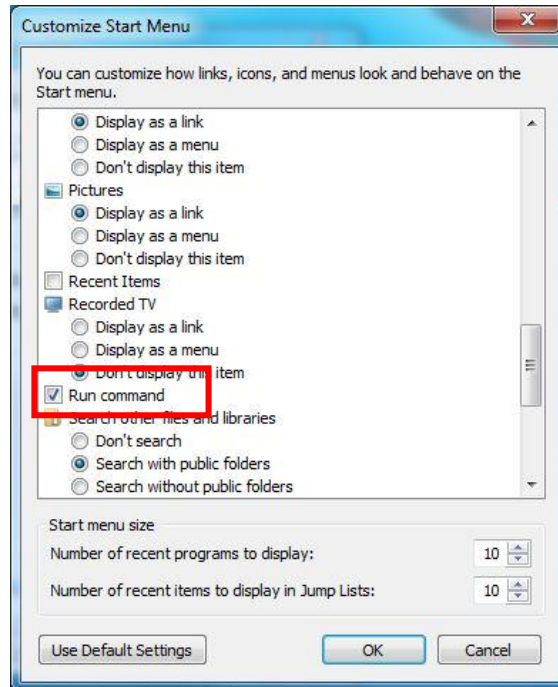


#### 4. Add the Run Command and Printers to the start menu:

- Right-click the **Start Orb** and click “**Properties.**” In the start menu tab click the “**Customize**” button.



- Check the “**Run Command**” and “**Devices and Printers**” boxes and click **OK** twice.



## 5. Fix the New Program Window so that the ReportGen program will automatically come to the front when launched. This is per the Microsoft Knowledge Base article #886217:

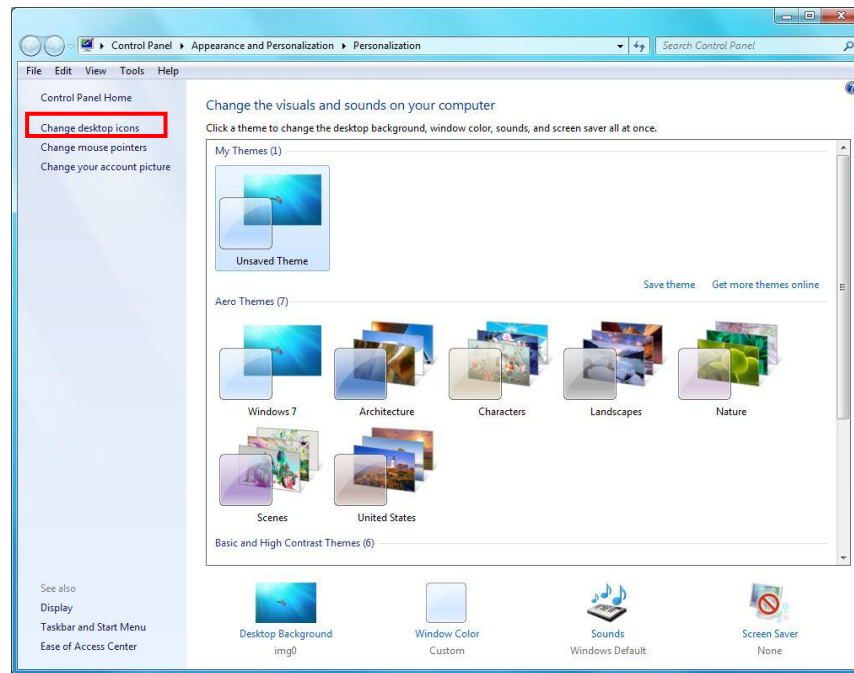
To resolve this issue, modify the value of the ForegroundLockTimeout registry entry in Registry Editor. To do this, follow these steps:

- 1 Click the **Start Orb**, click **Run**, type **regedit** in the **Open** box, and then click **OK**.
- 2 In Registry Editor, locate and then click the following registry subkey:  
**HKEY\_CURRENT\_USER\Control Panel\Desktop**
- 3 In the right pane, locate and then double-click **ForegroundLockTimeout**.
- 4 Under **Base**, click **Decimal**, type **0** in the **Value data** box, and then click **OK**.  
**Note** The default decimal value for the ForegroundLockTimeout registry entry is set as **200000**.
- 5 Quit Registry Editor.
- 6 **Restart** your computer.

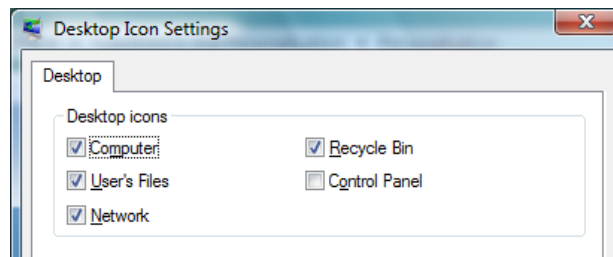
*\*This must be done for each User Account on the system.*

## 6. Add the “Computer” and “Network” icons to the desktop:

- Right-click on the desktop and click **Personalize**.
- Click on “**Change Desktop Icons**” under Tasks.

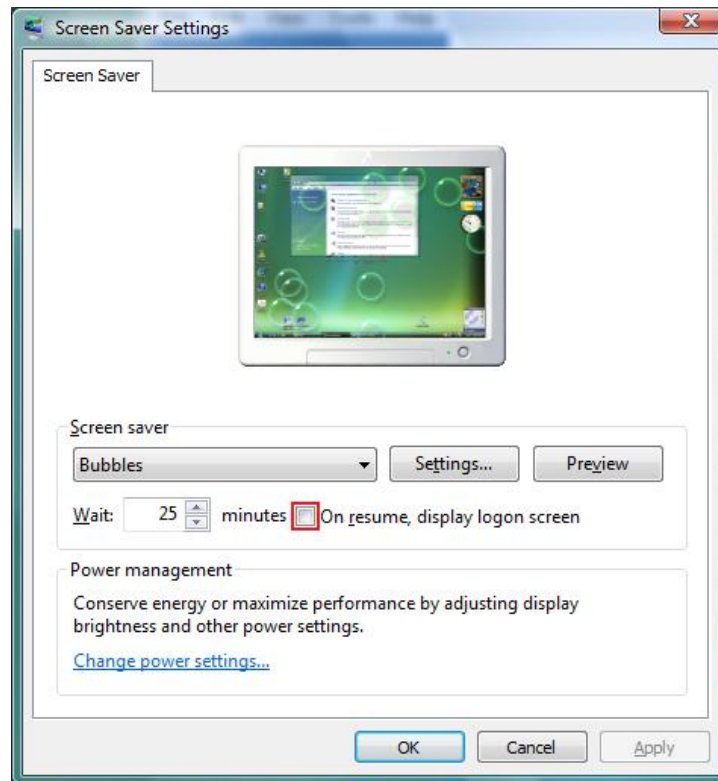


- Check the boxes for the **Computer** and **Network** from the available icons.
- Click **Apply** than Click **OK**.




## 7. Disable password protection on Screen Saver:

- Right-Click anywhere on the desktop and click “**Personalize.**” Click on the **Screen Saver** link in the lower right corner.

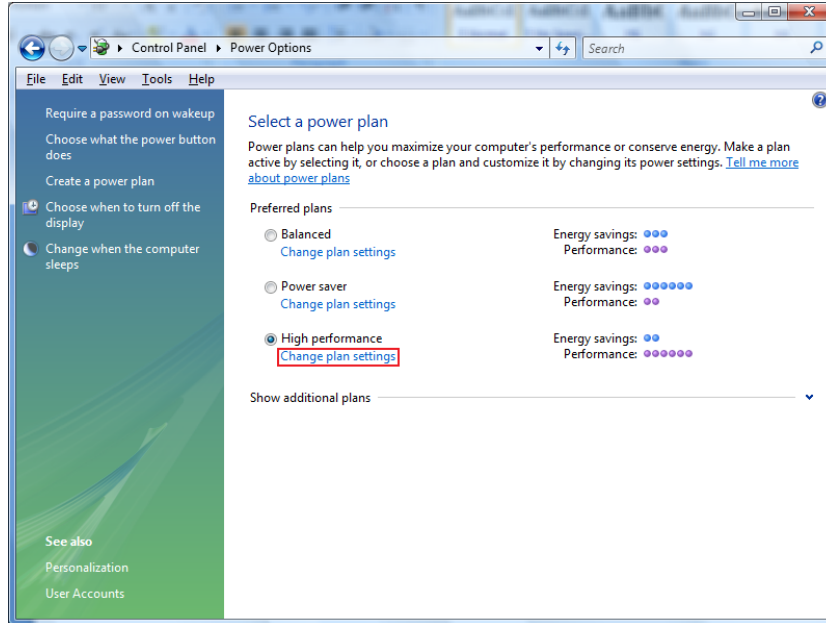


- Then **uncheck** the “**On resume, display the login screen**” and click **OK**.

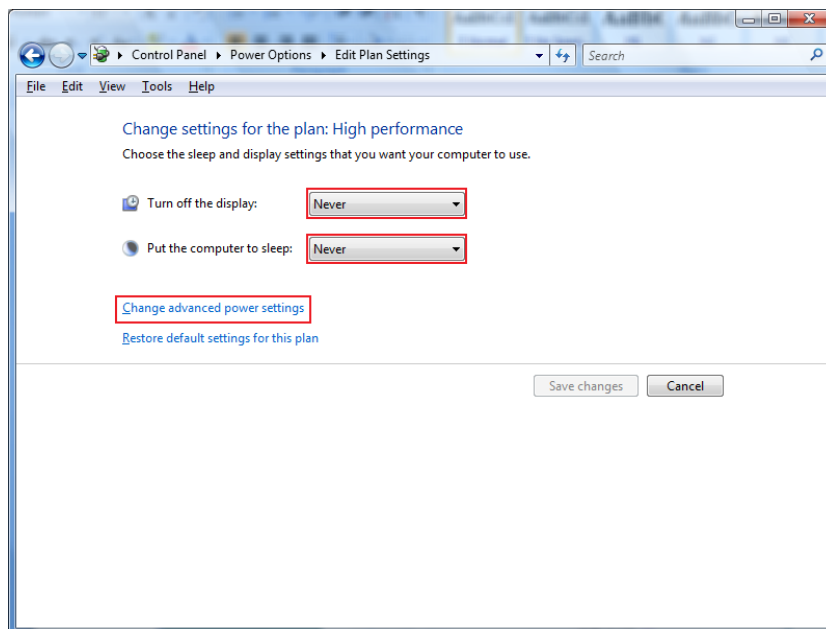
## 8. Configure the Power Settings for a Laptop or Desktop:

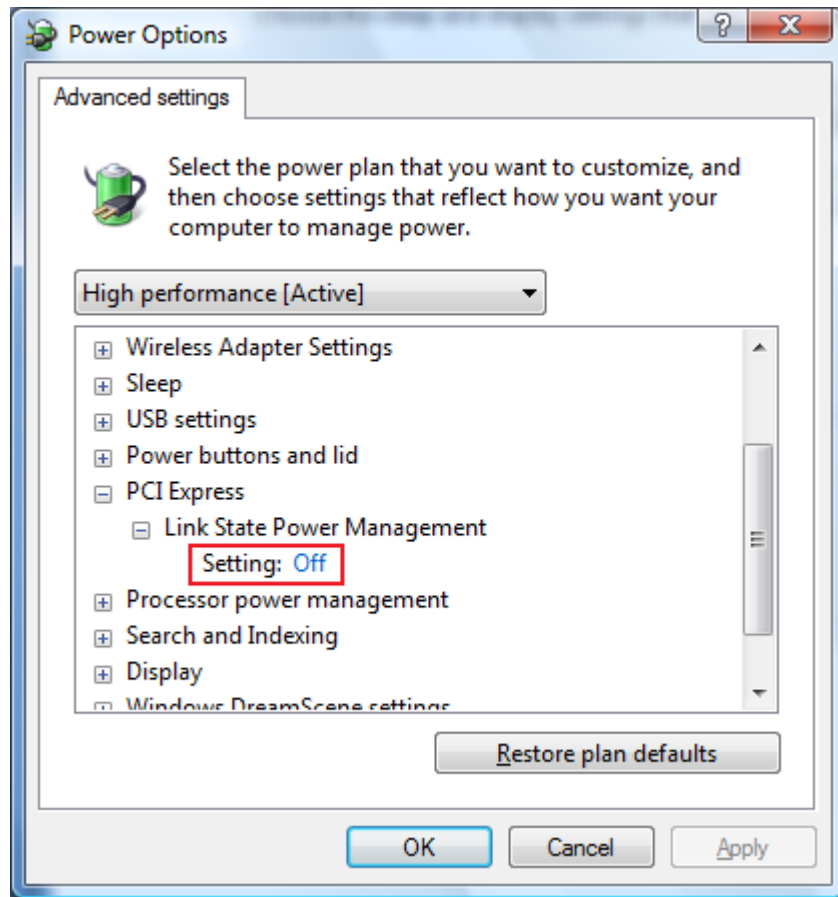
- Click the **Start Orb** .
- Click on the **Control Panel**.
- Change the “**View by:**” to “**Large Icons**” or “**Small Icons**”. *Do not use “Category View”.*
- In the control panel list click on “**Power Options**”.

- Select the **High Performance** option. If you don't see this option, click on Show Additional Plans.




- Click on the “**Change Plan Settings**” link under High Performance.
- Click the dropdown list for both “**Turn off the Display**” and “**Put the Computer to Sleep**” and set them to **NEVER**.





- Next click the “**Change Advanced Power Settings**” link and set the “**Link State Power Management**” setting to **OFF**. That only needs to be done under the **PCI Express** setting. Then click **OK** out of everything to set all the power settings.

## 9. Show File Extensions

- Click the **Start Orb** .
- Click on the **Control Panel**.
- Change the “**View by:**” to “**Large Icons**” or “**Small Icons**”. *Do not use “Category View”.*
- Click on “**Folder Options**”
- Click on the **View** tab.
- **Uncheck** the box “**Hide extensions for known file types**”.
- Click **Apply** than **OK**.

**10. Change the default Windows Theme. This fixes the issue with the L and R side buttons in the mode setup window.**

- Copy the **Cascade.themepack** from the installation CD under **Extras\Cadwell Wallpaper\** to your Desktop.
- Double-left click on the **Cascade.themepack** icon on your Desktop. This will apply the Cascade themepack and correct the fonts needed to access all of the Cascade menu options.

