



Cadwell Cascade Installation Instructions

Version 1.9.29

Please read all instructions prior to inserting the upgrade CD. Version 1.9.29 is compatible with the Windows XP operating system. Version 1.9.29 will not load on Windows 2000 or Window 98.

1. Insert the **Cascade 1.9.29 CD** into your computer. The main installation menu will be displayed.

If the installation menu does not appear automatically, click the **Start** button and select **Run**. In the box provided type **D:\Autorun** and then click **OK**. (*D is the letter typically assigned to your CD drive but it could be a different letter depending on the configuration of your computer*)



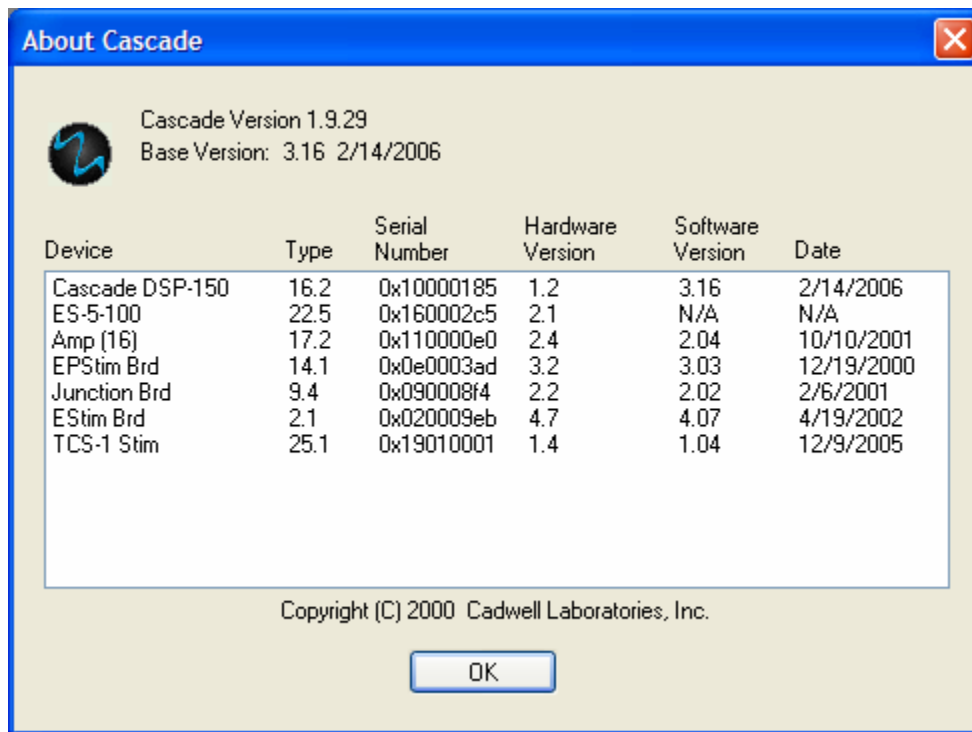
2. Click the **Install Cascade** button. Follow the on-screen instructions.

On the Customer Information window:

- The User Name and Organization Name are optional.
- Select the default install option, "Anyone who uses this computer (all users)".

If you are asked to restart the computer, go ahead and do this before proceeding to the next step.

3. After the Cascade software install is completed, click on the **Update Firmware** button. This will download new firmware to the base unit (the base unit must be connected to the PC and turned **ON** in order to do this).
4. After the firmware download is finished, turn the base unit **OFF**, wait 10 seconds, and then turn the base unit back **ON**. ***This step does not need to be performed on Reader stations.*
5. **Close** the installation menu and eject the CD.
6. **Start the Cascade** program by **double clicking** on the Cascade **icon** on the Window's Desktop.
7. Verify version numbers by selecting **About Cascade...** from the **Help** menu. The Cascade Version number at the top of the window should be **1.9.29**. The Base Version number at the top of the window should be **3.16**. The information for the individual devices listed in the white box will vary depending on the components in your base and the peripherals attached to your base.



Note: Cascade users with the optional trigger-in hardware modification to the base (DTS192-200) should always manually install the DSP firmware from the DSP folder on the CD. DTS192-200 users should not choose the automatic firmware update mentioned above nor the automatic firmware installation option when installing from CD.