



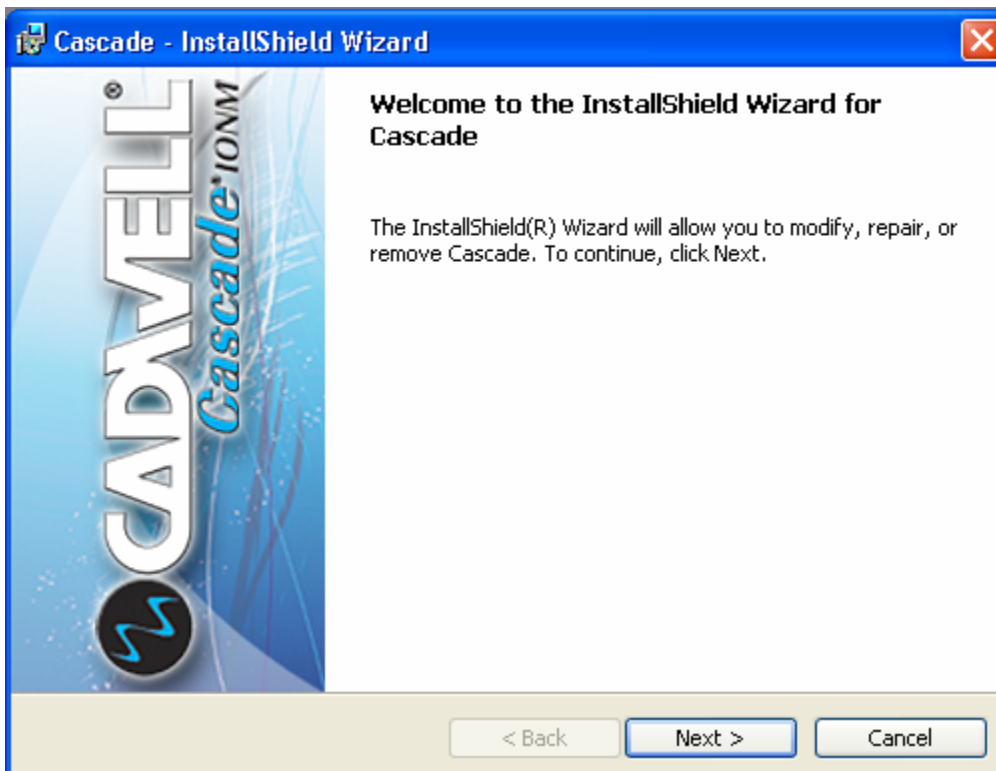
## Software Installation Instructions Cadwell Cascade and Cascade Elite, Version 2.1

Please read all instructions prior to inserting the upgrade CD.

- Version 2.1 is compatible only with the Windows XP operating system running service pack 2 or later.
- Version 2.1 will not load on Windows 2000, Windows 98, or Windows Vista.
- You must have administrative rights on your computer in order to load or upgrade the Cascade or Cascade Elite software.

### *Installation Instructions*

1. Insert the Cascade 2.1 CD into your computer. The main installation menu will be displayed.



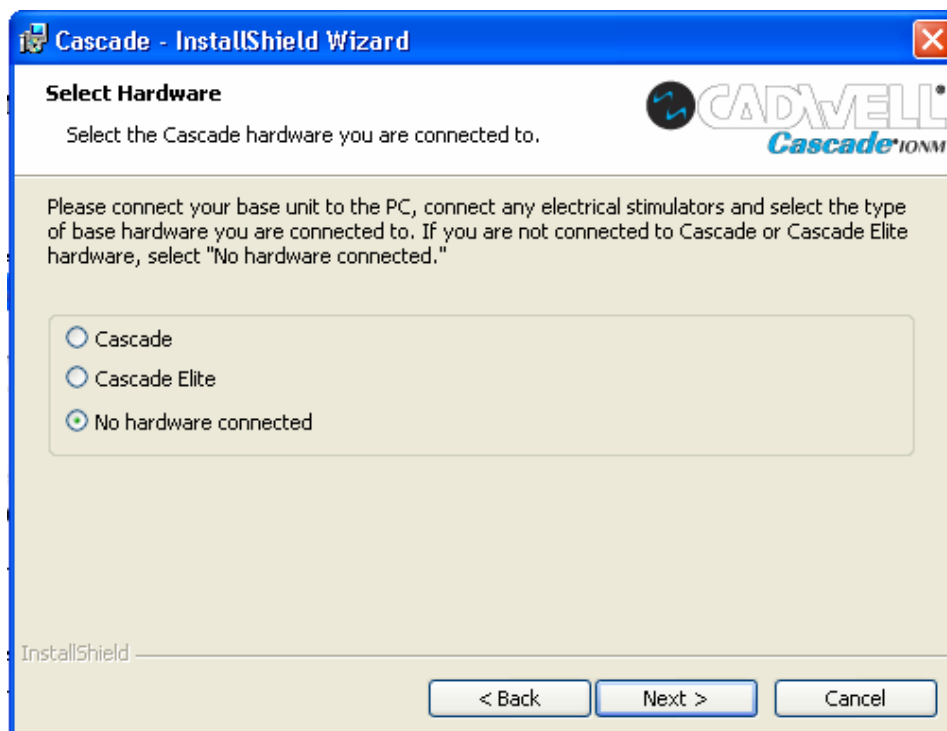
*Note: If the installation menu does not appear automatically, click the Start button and select Run. In the box provided type D:\Autorun and then click OK. (D is the letter typically assigned to your CD drive but it could be a different letter depending on the configuration of your computer).*

2. Click the Next button, read the Release Notes and click the Next button.

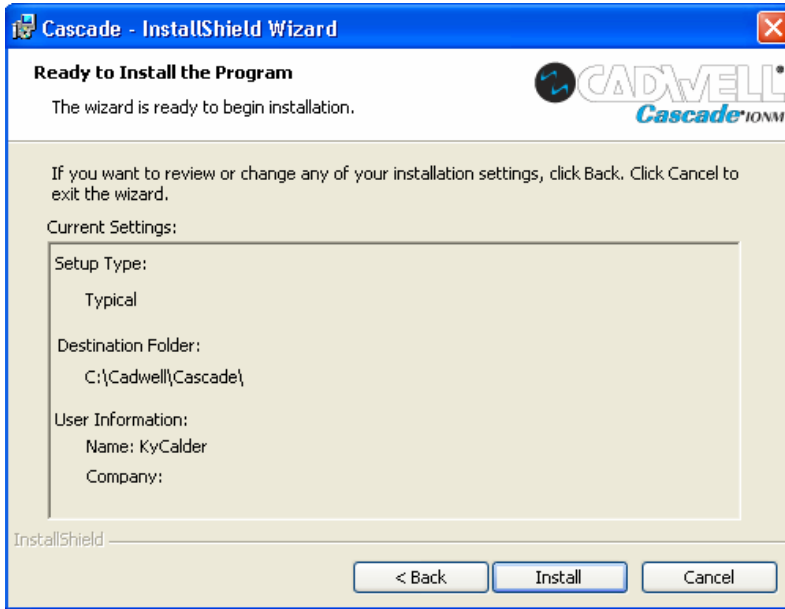


3. Confirm or change the destination folder and click the Next button.
4. Select the type of base unit the computer is connected to or choose the No Hardware Connected option and click the Next button. Make sure the base unit is connected and powered on.

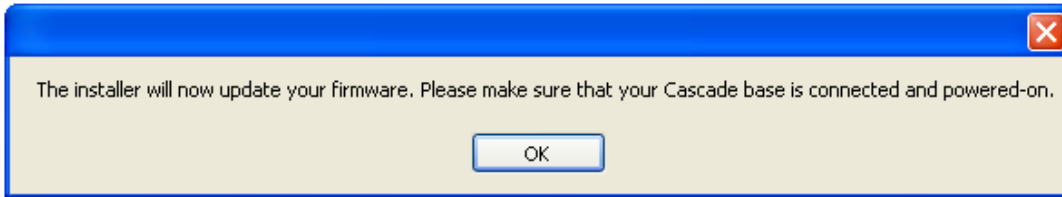
*Note: Cascade users with the optional trigger-in hardware modification to the base (DTS192-200) should always manually install the DSP firmware from the DSP folder on the CD. DTS192-200 users should not choose the automatic firmware update mentioned above, or the automatic firmware installation option when installing from the CD.*



- Review the installation settings and click the Install button.



- If you selected hardware in step 4, connect your Cascade or Cascade Elite base unit and click OK.



- When the InstallShield installation is complete, click the Finish button to exit the installation process.
- After the installation is complete, turn the base unit OFF, wait 10 seconds and then turn the base unit back ON. If no base unit is connected, ignore this step.
- Start the Cascade program by double clicking the Cascade icon on the Window's Desktop.
- Verify version numbers by selecting About Cascade... from the Help menu.

Hardware Type	Cascade Version	Base Version	Junction Board SW	Estim Board SW
16-Channel Cascade	2.1.84	3.20	2.2	5.8
32-Channel Cascade Elite	2.1.84	3.57	2.2 <sup>†</sup>	5.8*

<sup>†</sup> Version 2.2 Junction Board SW on the Cascade Elite is only compatible with Cascade Elite Base Version 3.57 or later and is not backward compatible with earlier versions of Cascade Elite Base firmware.

\* Version 5.8 Estim Board SW on the Cascade Elite is compatible with Cascade Elite Base Version 3.57 and earlier.