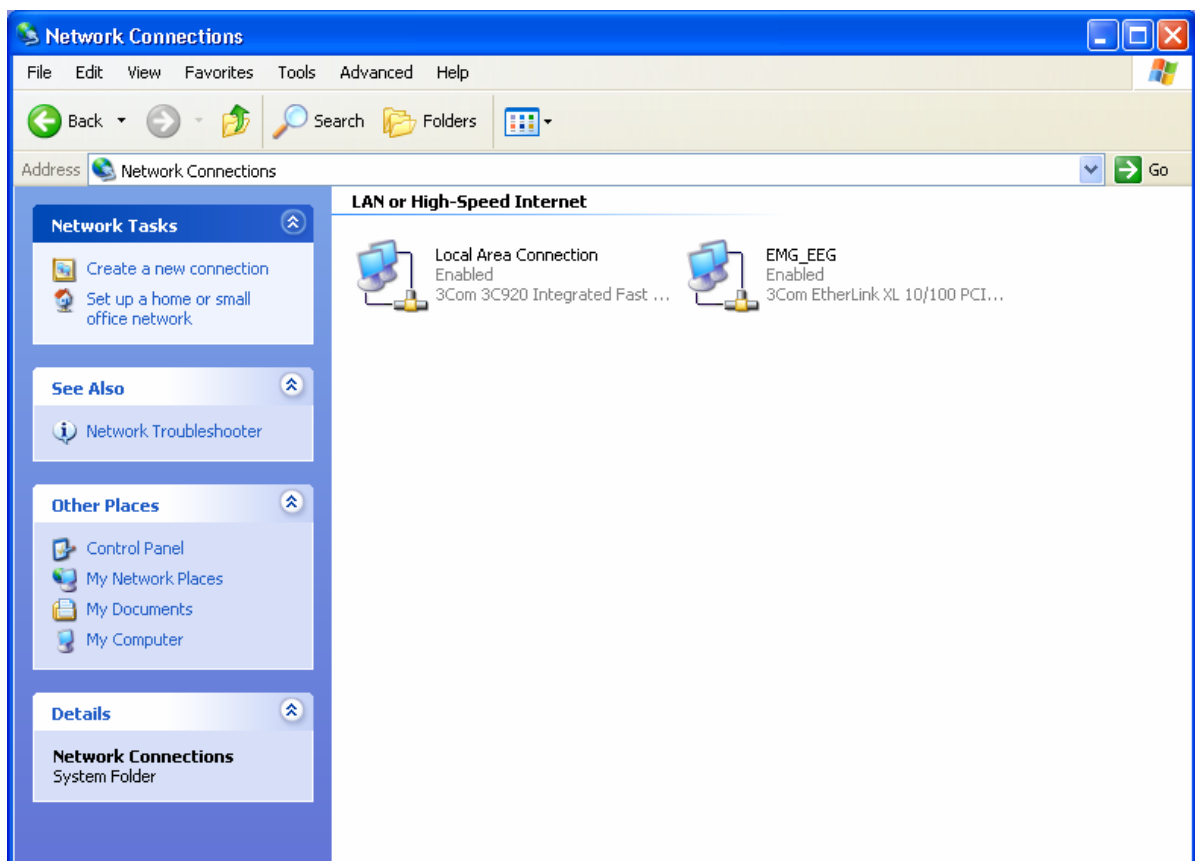
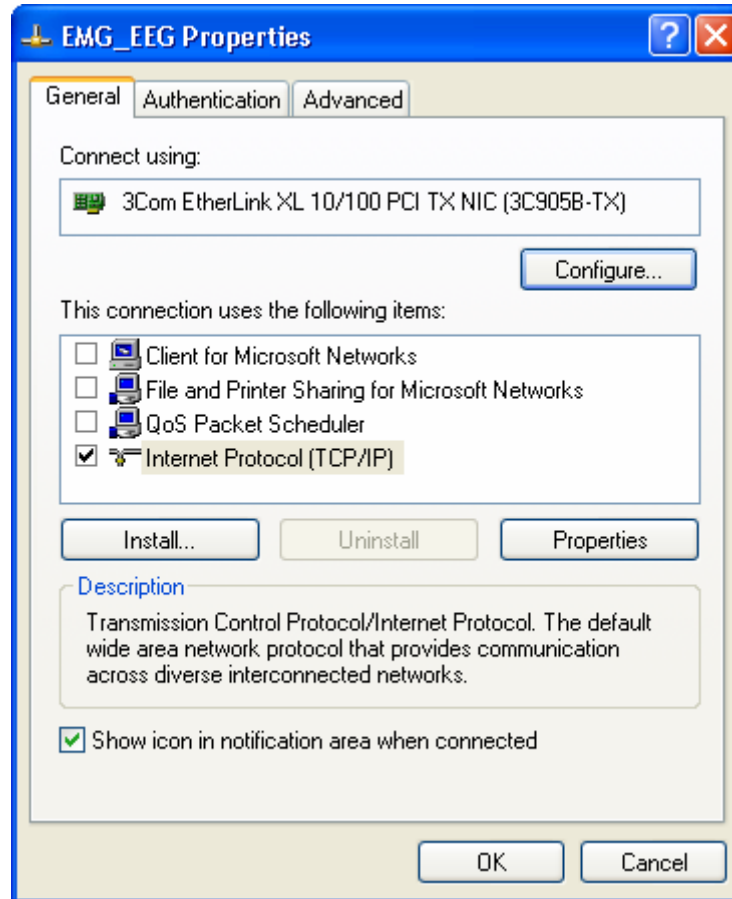


CONFIGURING NETWORK CARD PROPERTIES IN WINDOWS XP

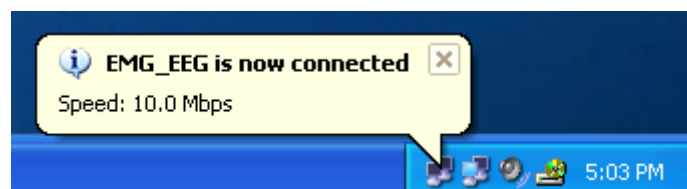
1. If necessary, install a network card in the computer. Follow the manufacturer's installation instructions.
2. **Login** as a User that has administrative access rights.
3. Click **Start**, then **Control Panel**, then **Network and Internet Connections**.
4. Click on **Network Connections**. The Network Connections window will be displayed. An separate icon will be displayed for each network card that is installed in the PC. By default, the name given to each network card is "Local Area Connection". You can rename the icons to something more descriptive by right-clicking on the icon and then selecting Rename. For example, you might want to change the name to Sierra, or maybe to EMG_EEG as shown in the picture below.



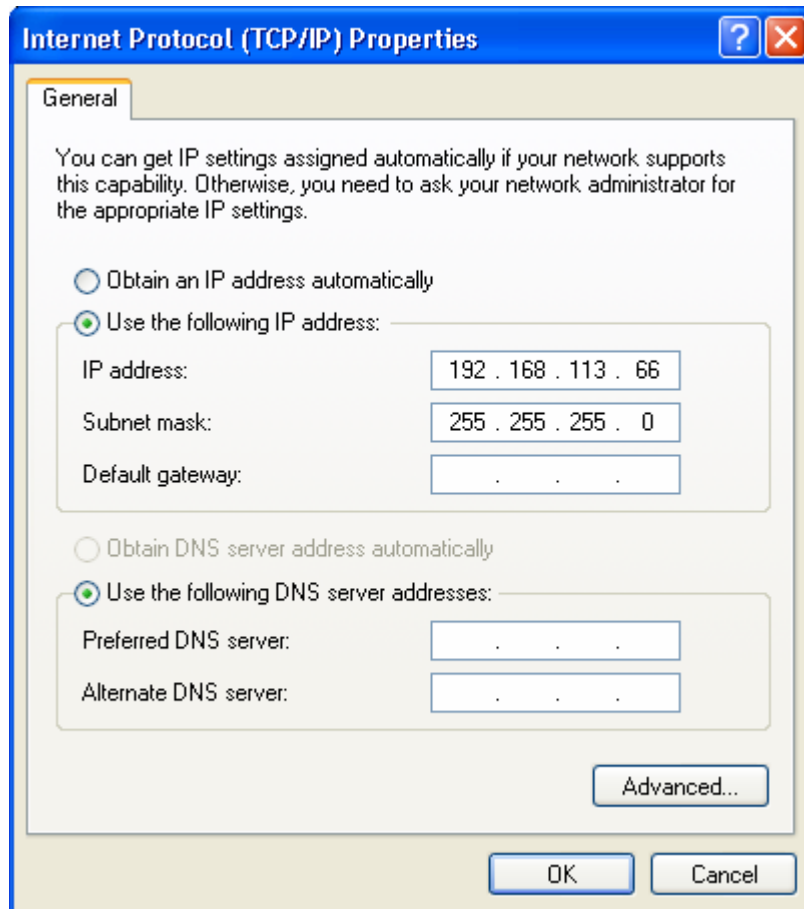
5. To configure the network properties; **Right click** over the appropriate icon and then select **Properties**. The properties window will be displayed as shown in the next picture.



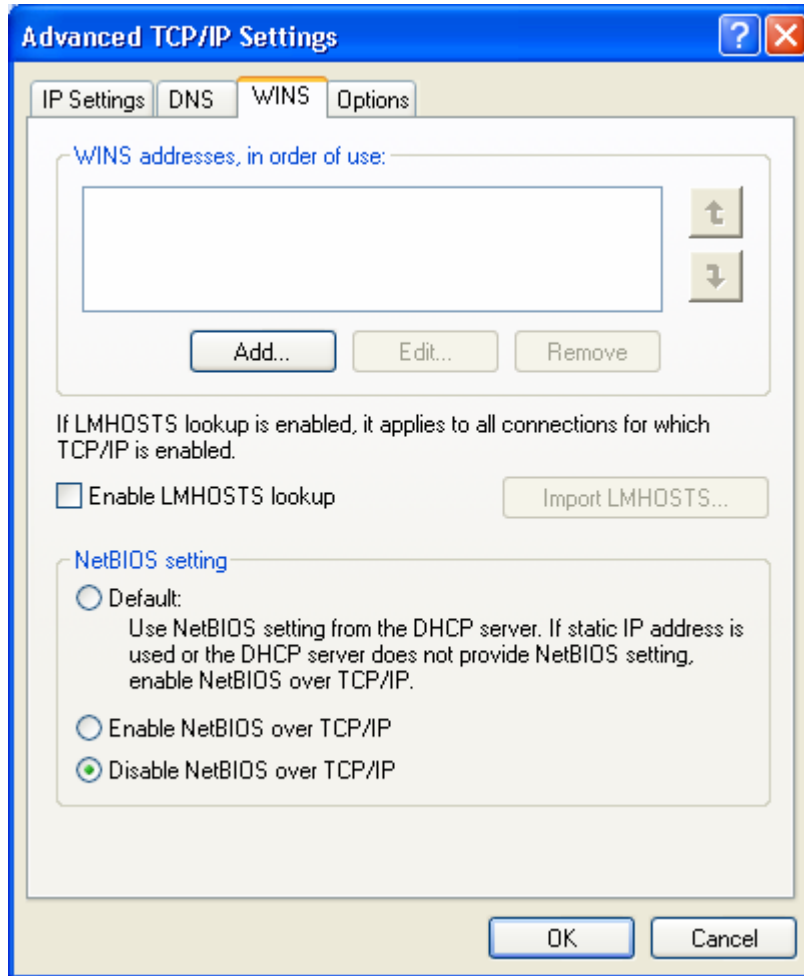
6. First, **remove the check marks** next to Client for Microsoft Networks, File and Printer Sharing for Microsoft Networks, and QoS Packet Scheduler. Be sure to **leave the check mark** next to Internet Protocol (TCP/IP).
7. Optional: Place a check mark next to "Show icon in notification area when connected" if you want Windows to tell you when the connection to the Cadwell system has been made. When the connection is made you will see the following message displayed in the lower right hand corner of the desktop.



8. Select the **Internet Protocol (TCP/IP)** and then click on the **Properties** button.
9. Select **“Use the following IP address”**. Enter **192.168.113.66** for the IP Address. Enter **255.255.255.0** for the subnet mask.



10. Click the **Advanced** button, then click the **WINS** tab. Remove the check mark next to “**Enable LM Hosts** lookup” and then select “**Disable NetBIOS over TCP/IP**” as shown in the following picture.



11. Click **OK**, click **OK** again, then click **Close**.

Note: If this is the first time Sierra Wave has been setup on this system you will need to run the C:\Cadwell\Sierra Wave\SierraIP.exe program after installing the Sierra Wave software. This program updates the system registry with the IP address of the Sierra Wave Base Unit. See the graphic below for the correct response of running SierraIP.exe.

