

Installation Instructions

Sierra Wave Version 9.0.309

PLEASE READ ALL INSTRUCTIONS BEFORE INSERTING THE CD

Prior to installing this upgrade, please verify that your computer meets or exceeds the minimum system requirements needed to run this software. If you need assistance in determining your computer's system specifications, please contact the Cadwell Applications Support department at (800) 245 – 3001.

Operating System	Minimum Requirements for Version 9.0.309
Windows XP Professional	500 MB RAM Pentium 4 or Centrino Processor
Windows Vista (32-bit)	2.0 GB RAM Dual Core Processor (Centrino Duo, Core2 Duo, Pentium D)



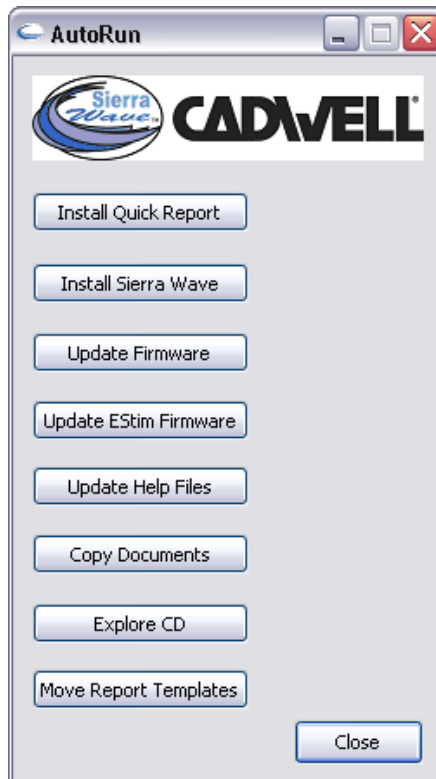
You must have administrative rights on your computer in order to install the Sierra Wave Software.



If you are installing this upgrade on a Windows Vista computer, please read the Windows Vista note on page 5 before proceeding with the upgrade.

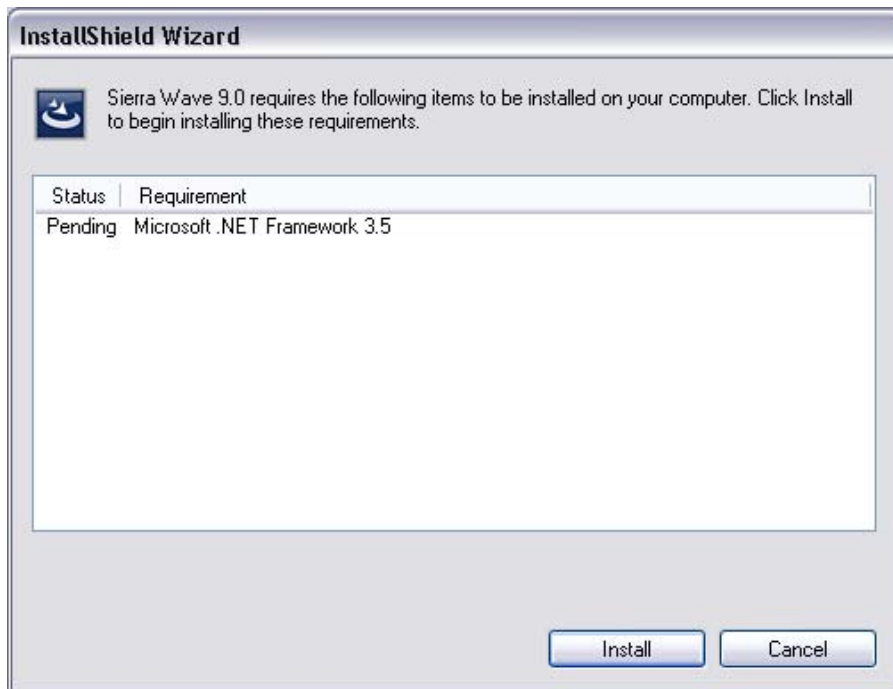
1. Insert the **Sierra Wave 9.0.309 CD**. The main installation menu will be displayed.

If the installation menu does not appear automatically, click the **Start** button and select **Run**. In the box provided type **D:Autorun** and then click **OK**. (*D is the letter typically assigned to your CD drive but it could be a different letter depending on the configuration of your computer*).



2. Click on the **Install Quick Report** button. Follow the on-screen instructions. *This step is not necessary and can be skipped if you are upgrading from Sierra Wave version 8.0.69.*
3. Click on the **Install Sierra Wave** button. Existing patient data and user settings will not be erased.

This upgrade requires that **Microsoft .NET Framework 3.5** be installed on your computer, this is required by some of the new features introduced in the Sierra Wave program. If you see the following message, click the **Install** button. It takes approximately 4 minutes to complete the .NET installation.



Once the .NET installation is complete, the installation of Sierra Wave software will begin automatically. *If you are asked to restart the computer, go ahead and select “Yes” and the installation of Sierra Wave will continue automatically once the computer has restarted.*

In the initial Welcome to Sierra 9.0 Install window:

- Click the **Next** button.

On the Customer Information window:

- The User Name and Organization Name are optional.
- Use the default install option; “Anyone who uses this computer (all users)”.
- Click the **Next** button.

In the Destination Folder window:

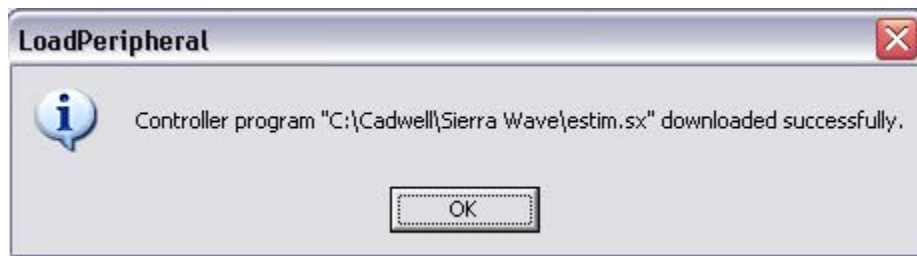
- Use the default destination; C:\Cadwell\Sierra Wave.
- Click the **Next** button.

When the installation is complete; click the **Finish** button.

After the Sierra Wave installation is complete, if you are asked to restart the computer, go ahead and do this before proceeding to the next step.

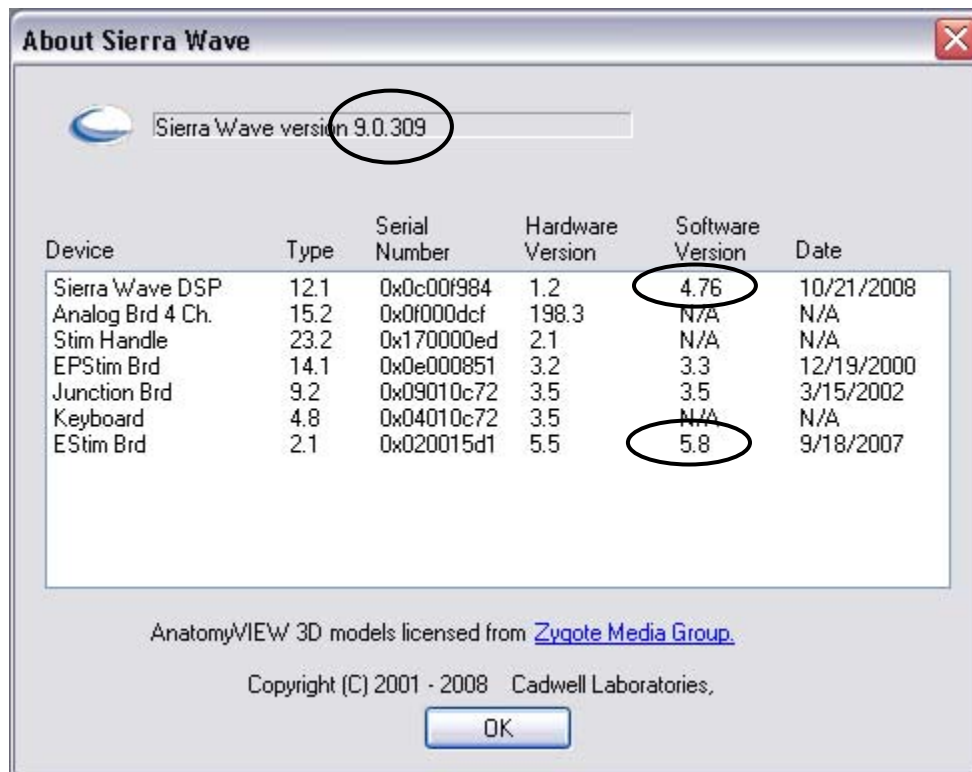
If the installation menu is no longer displayed, eject and reinsert the installation CD.

4. After the Sierra Wave software installation is completed, click on the **Update Firmware** button. This will download new firmware to the base unit (the base unit must be connected to the PC and turned **ON** in order to do this). After the download is finished, turn the base unit **OFF** for a few seconds and then turn it back **ON**.
5. Once the base unit has been powered **ON** for a few seconds, click on the **Update EStim Firmware** button. This will download new firmware to the electrical stimulator board inside the base unit. This new firmware is required in order to support some of the new features in the Sierra Wave program. You will see the message shown below when this is completed. Click **OK**.



6. Click on the **Update Help Files** button. This will install the most recent versions of the Sierra Wave and Quick Report Help files.
7. (Optional step) Click on the **Copy Documents** button. This will create a folder on your Windows Desktop called "Version 9 Info". This folder will contain a copy of the Release Notes for this software upgrade.
8. **Close** the installation menu and eject the CD.
9. **Restart** the computer.
10. **Start the Sierra Wave** program by **double clicking** on its **icon** on the Window's Desktop. *If you see a message regarding user initialization, answer, "YES". This will create the appropriate Setup and Data folders for the program.*

11. Verify version numbers by selecting **About Sierra** from the **Help** menu. The software version number should be **9.0.309**, the Sierra Wave DSP version should be **4.76**, and the EStim Brd firmware should be **5.8**. Refer to the picture on next page.



12. Please review the **Release Notes** for a description of the new features included in this software upgrade.

Additional Notes:

Upgrading on Windows Vista:

On a Windows Vista computer you must un-install the previous version of Sierra Wave before you can install the version 9 upgrade. *This will not delete patient data or test settings from your system.*

From the **Control Panel**, select **Programs & Features**. In the list of installed programs, select **Sierra Wave 8.0** and then click the **Uninstall** option at the top of the list. After the uninstall is complete, return to page 1 and follow the version 9 installation instructions.

Move Report Templates:

If you are upgrading from version **5.5.29** or **6.0.33** you will need to click on the Move Report Templates button. This step will move your report template database to its new location; this is required by the latest version of QuickReport. **If you don't perform this step you may lose all of your previous report templates.** *This step is not required if you are upgrading from version 7.0.51, 7.0.52, or 8.0.69.*

QuickReport Login:

If you launch QuickReport without the Sierra Wave program running you will get a Login window. For the ID, select **SierraUser** from the drop-down list, leave the password empty and click **OK**.

Factory Default Settings (Optional for Demo Systems Only):

If you would like to reconfigure your system with the most recent factory default settings, test protocol layouts, and report templates, perform a **RESTORE-ALL** function using the preserve file on the installation CD. The preserve file is located in the **Defaults folder** and is called "**Version 9 Defaults with Datalab.prs**". *Note: Prior to performing this step you may want to preserve your current system settings; this will allow you to return to your original settings if the need should arise.*

Reader Station Installation Instructions:

Perform only the following steps:

1. Install QuickReport. *This step can be skipped if the Reader Station already has Sierra Wave version 8.0.69 installed on it.*
2. Install Sierra Wave.
3. Update Help Files.
4. Restart the computer.

Note: To disable the hardware communication error message – go to the C:\Cadwell\Sierra Wave folder and double-click on the file ReaderStationOn.reg. Answer 'Yes' or 'OK' to any messages that are displayed.