



Installation Instructions for Sierra Wave Version 10.0.125

Prior to installing this upgrade, please verify that your computer meets or exceeds the minimum system requirements needed to run this software. If you need assistance in determining your computer's system specifications, please contact the Cadwell Applications Support department at (800) 245 – 3001.

| Operating System | Minimum Requirements for Version 10.0.125 |
|------------------------------|--|
| Windows XP Professional | 500 MB RAM Pentium 4 or Centrino Processor |
| Windows Vista (32 or 64 bit) | 2.0 GB RAM Dual Core Processor (Centrino Duo, Core2 Duo, Pentium D) |



You must have administrative access rights on your computer in order to install the Sierra Wave Software.



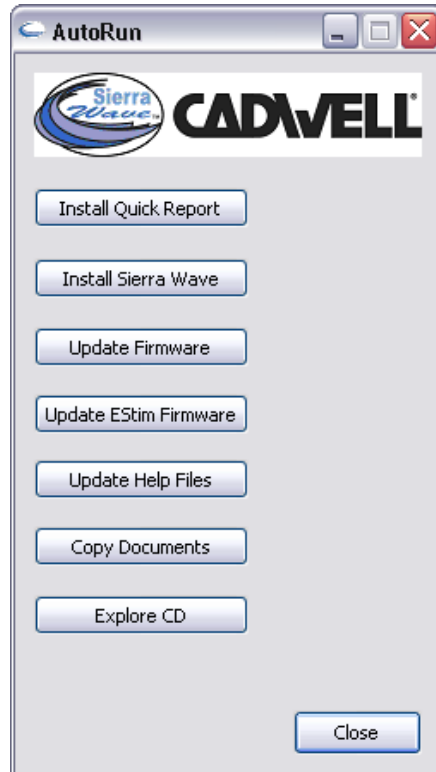
Installation on Windows Vista:

On a Windows Vista computer you must un-install the previous version of Sierra Wave before you can install the upgrade. *This will not delete patient data or test settings from your system.*

From the **Control Panel**, select **Programs & Features**. In the list of installed programs, select **Sierra Wave** and then click the **Uninstall** option at the top of the list. After the uninstall is complete proceed with installing the new update.

1. Insert the **Sierra Wave 10.0.125 CD**. The main installation menu will be displayed.

If the installation menu does not appear automatically, click the **Start** button and select **Run**. In the box provided type **D:Autorun** and then click **OK**. (*D is the letter typically assigned to your CD drive but it could be a different letter depending on the configuration of your computer*).



2. Click on the **Install Quick Report** button. Follow the on-screen instructions.
 - The installer will prompt you to delete the old QuickReport files. Answer "Yes" to the delete files message. *This will not delete your report templates.*
 - If you are prompted to delete shared files, answer "Yes-to-All".
 - Click OK when the uninstall is completed.
 - Click Next to proceed with the installation of QuickReport.
3. Click on the **Install Sierra Wave** button. Existing patient data and user settings will not be erased.

This upgrade requires that **Microsoft .NET Framework 3.5 SP1** be installed on the computer. This can take several minutes. When the .NET installation finishes you will be asked to Restart the computer. Select "Yes" to restart the computer.

Once the computer has restarted the installation of the Sierra Wave software will continue automatically.

In the initial Welcome to Sierra 10.0 Install window:

- Click the **Next** button.

On the Customer Information window:

- The User Name and Organization Name are optional.
- Use the default install option; "Anyone who uses this computer (all users)".
- Click the **Next** button.

In the Destination Folder window:

- Use the default destination; C:\Cadwell\Sierra Wave.
- Click the **Next** button.

When the installation is complete; click the **Finish** button.

After the Sierra Wave installation is complete, if you are asked to restart the computer, go ahead and do this before proceeding to the next step.

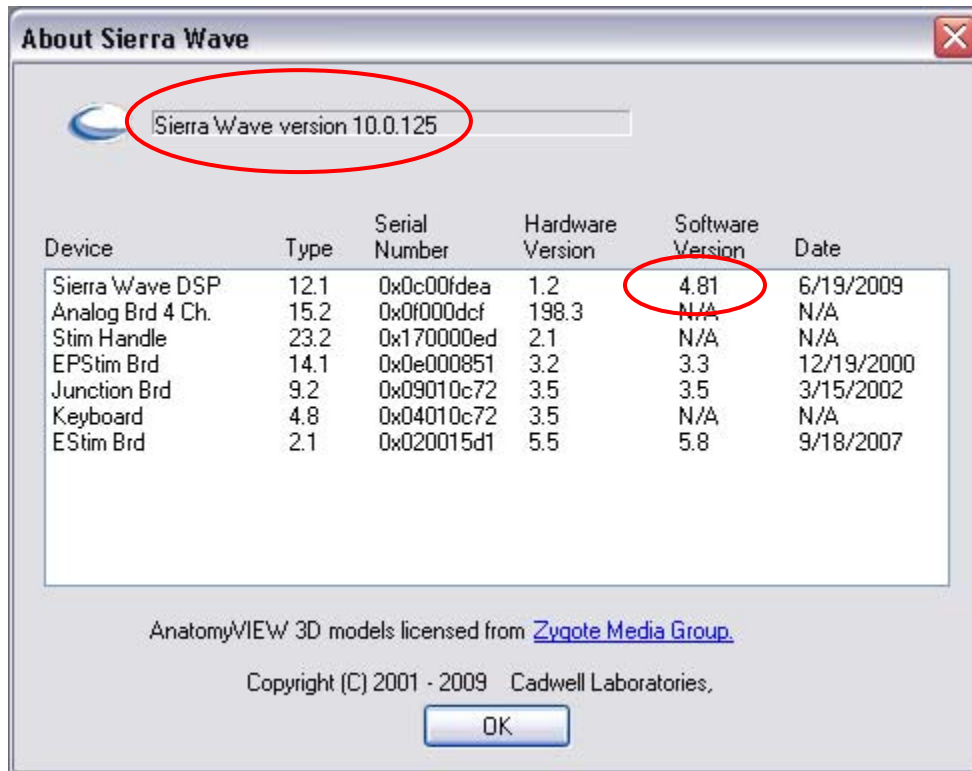
4. After the Sierra Wave software installation is completed, click on the **Update Firmware** button. This will download new firmware to the base unit (the base unit must be connected to the PC and turned **ON** in order to do this). After the download is finished, turn the base unit **OFF** for a few seconds and then turn it back **ON**.



If the installation menu is no longer displayed, eject and reinsert the installation CD.

5. Click on the **Update Help Files** button. This will install the most recent versions of the Sierra Wave and Quick Report Help files.
6. (Optional step) Click on the **Copy Documents** button. This will create a folder on your Windows Desktop called "Version 10 Info". This folder will contain a copy of the Release Notes for this software upgrade.
7. **Close** the installation menu and eject the CD.
8. **Restart** the computer.

9. Start the **Sierra Wave** program by **double clicking** on its **icon** on the Window's Desktop. *If you see a message regarding user initialization, answer, "YES". This will create the appropriate Setup and Data folders for the program.*
10. Verify version numbers by selecting **About Sierra** from the **Help** menu. The software version number should be **10.0.125**, and the Sierra Wave DSP version should be **4.81**.



11. Please review the **Release Notes** for a description of the new features included in this software upgrade.

Additional Notes:

Reader Station Installation Instructions:

Perform only the following steps:

1. Install QuickReport.
2. Install Sierra Wave.
3. Update Help Files.
4. Restart the computer.

Note: To disable the communication error message – go to the C:\Cadwell\Sierra Wave folder and double-click on the file ReaderStationOn.reg. Answer 'Yes' or 'OK' to any messages that are displayed.

QuickReport Login:

If you launch QuickReport without the Sierra Wave program running you will get a Login window. For the ID, select **SierraUser** from the drop-down list, leave the password empty and click **OK**.

Factory Default Settings (Optional for Demo Systems Only):

If you would like to reconfigure your system with the most recent factory default settings, test protocol layouts, and report templates, perform a **RESTORE-ALL** function using the preserve file on the installation CD. The preserve file is located in the **Defaults folder** and is called "**Version 10 Defaults without Datalab.prs**". *Note: Prior to performing this step you may want to preserve your current system settings; this will allow you to return to your original settings if the need should arise.*

Additional Documentation included on the Installation CD

- 100818-931 Sierra Wave Specification Sheet
- 100813-933 Sierra Wave Setup Guide
- 100813-937 Sierra Wave Brochure
- 319019-000 Cadwell Electrode Catalog, Rev 2009
- 369030-628 Configuring Windows Vista for Sierra Wave
- 369030-629 Configuring Word 2007 for use with QuickReport
- Network Card Setup Instructions
- Saving a Preserve file to CD or DVD in Windows Vista
- Sierra Wave Version 10 and Vista UAC
- Using Sierra Wave with a Limited User Account-XP
- Using Sierra Wave with a Standard User Account-Vista
- 369035-620 HL7 Interface Manual for Sierra Wave
- Getting Started Guide
- Sierra Wave Help Manual