
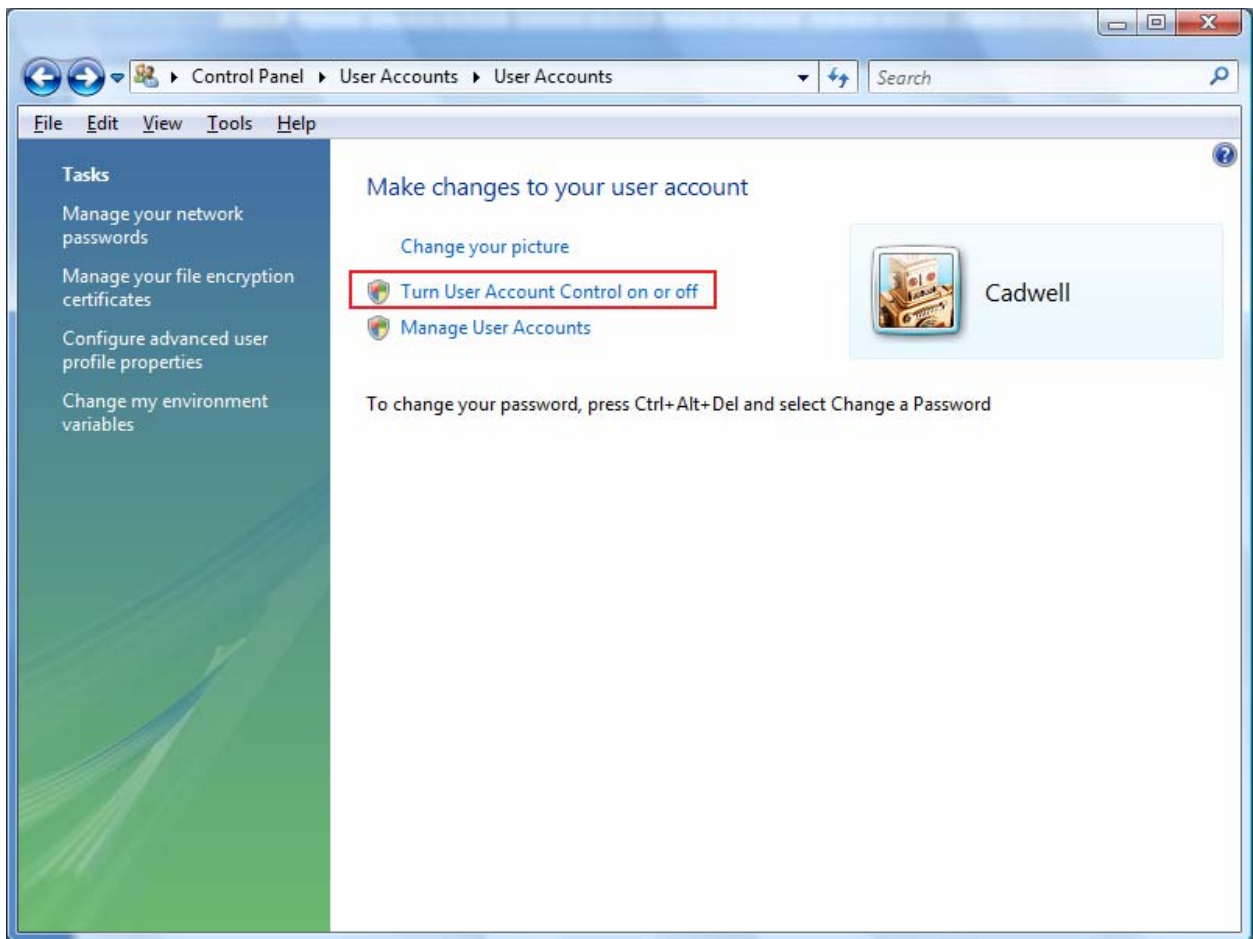


Configuring Windows Vista for Sierra Wave

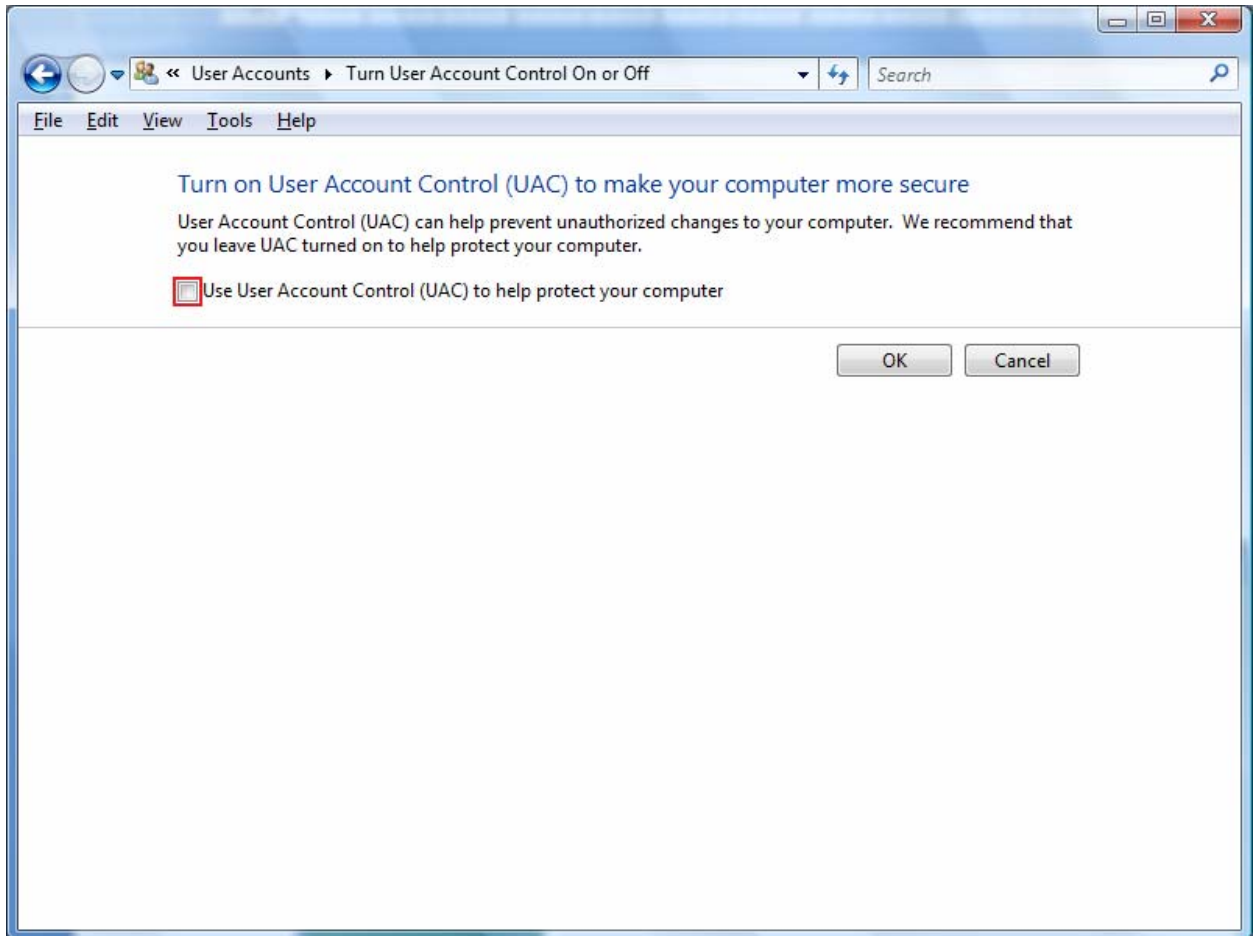
This document will describe how to setup Windows Vista for optimal performance of the Sierra Wave program, please configure Window Vista as outlined in the following instructions.

Turn off the UAC (User Account Control) before installing Sierra Wave:

- Click the **Start Orb** (it doesn't say start anymore) .
- Click on the **Control Panel**. Then click **User Accounts** and once again click the words "User Accounts."
- In that dialogue box click on "Turn User Account Control on or off".

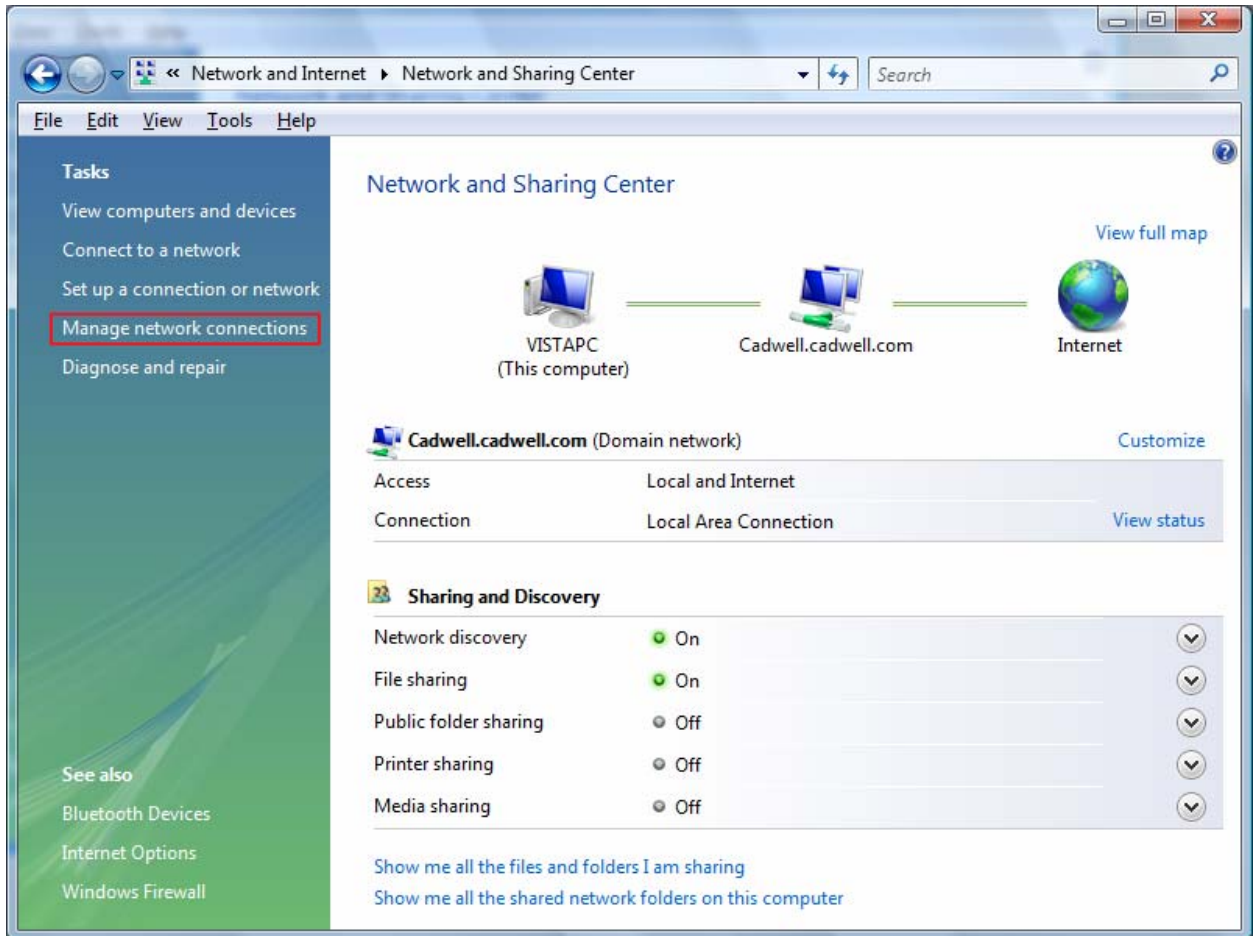


- Then uncheck the box that says “Use User Account Control (UAC) to help protect your computer”.

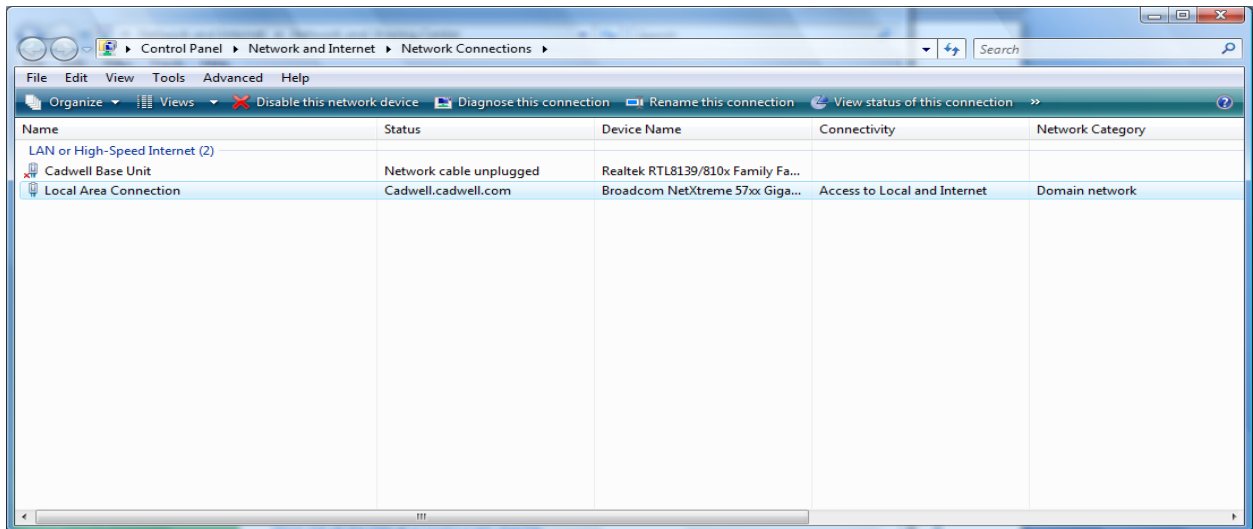


Configure the Network Card:

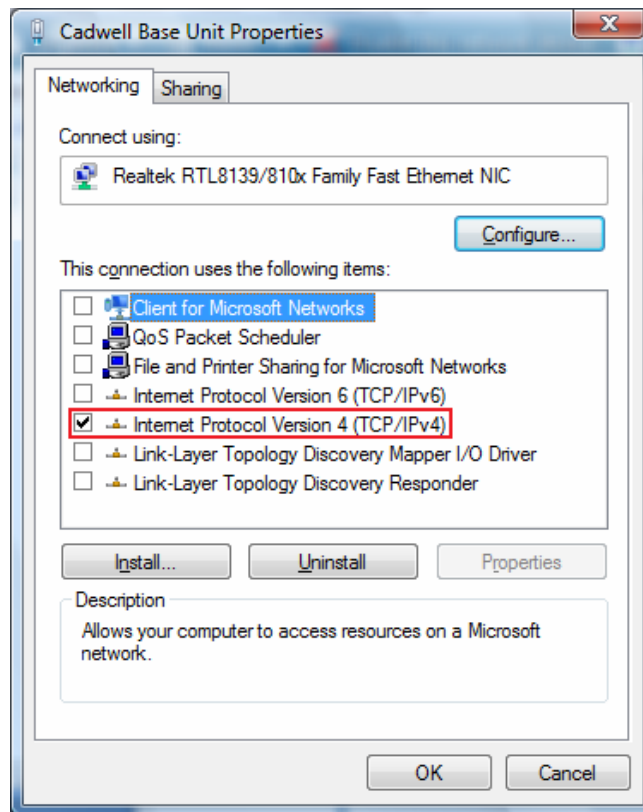
- Click on the **Start Orb** then the **Control Panel**.
- Click on “**View network status and tasks**” under the “**Network and Internet**” heading.
- Then click on **Manage Network Connections** on the left hand task pane.



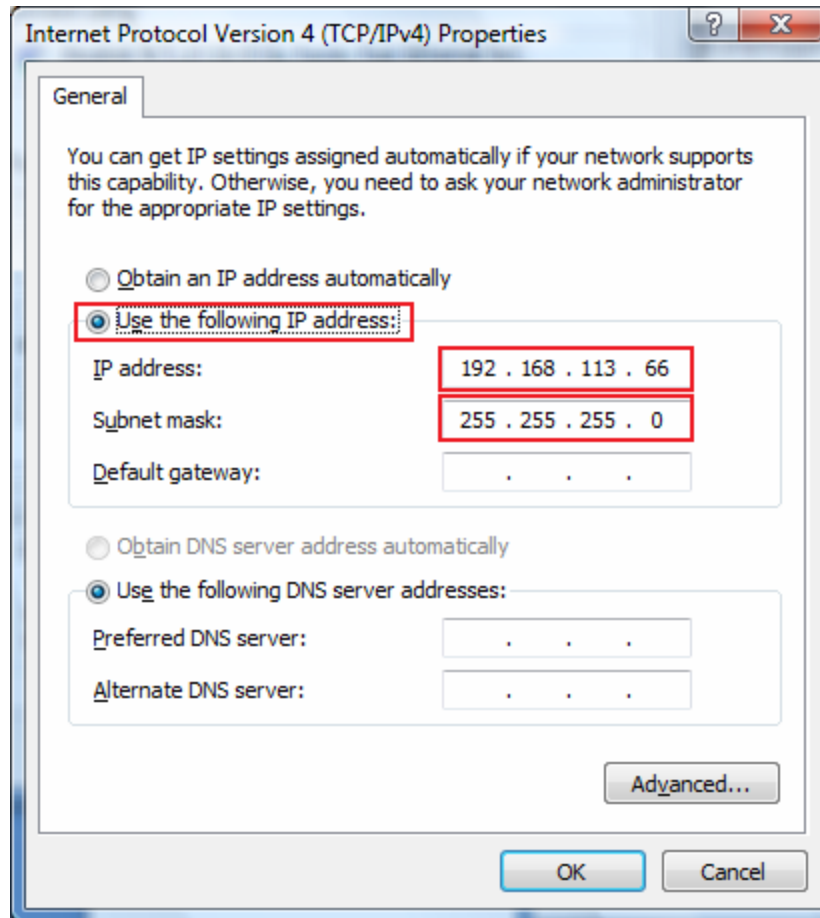
- This will show all the network connections available on the computer.



- **Right-click** on the LAN or High-Speed Internet connection that will be used to communicate to the base unit and click on **“Properties.”**

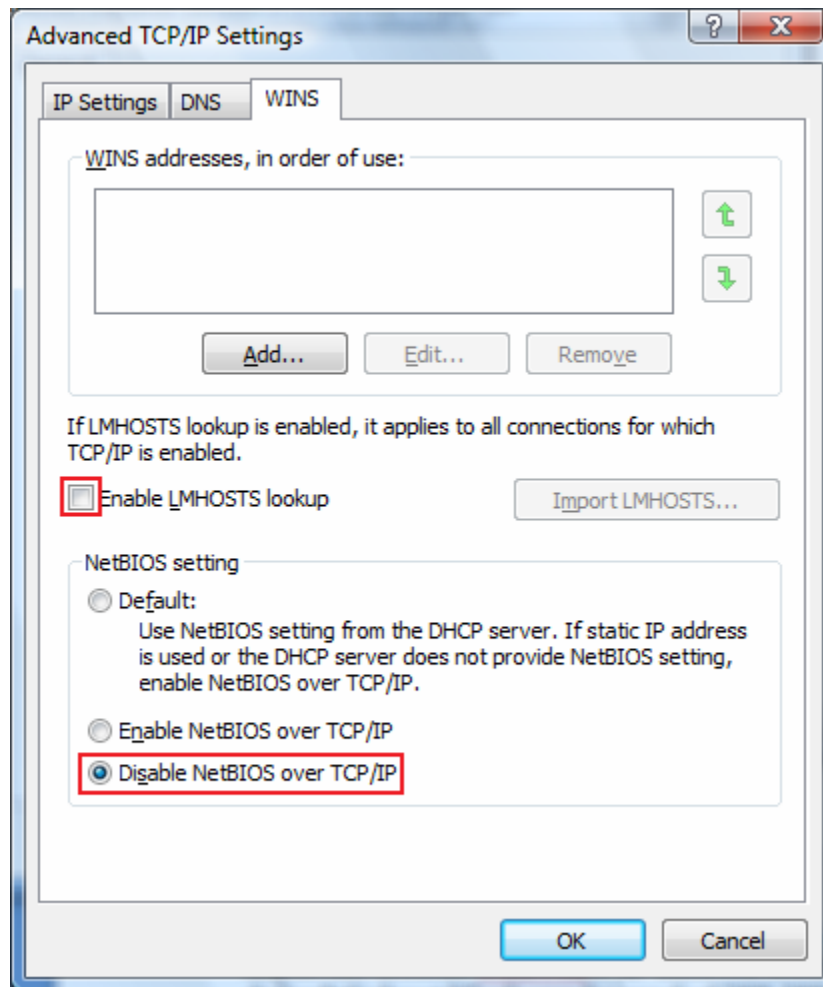


- Uncheck all the protocols in the list except for the **Internet Protocol Version 4(TCP/IPv4)**.
- Then double-click on that protocol and change the radial button from “Obtain and IP address automatically” to “Use the following address.”



- Input the default Cadwell® IP address used for all our machines. It is **192.168.113.66**. The default Subnet Mask can be used of **255.255.255.0**.

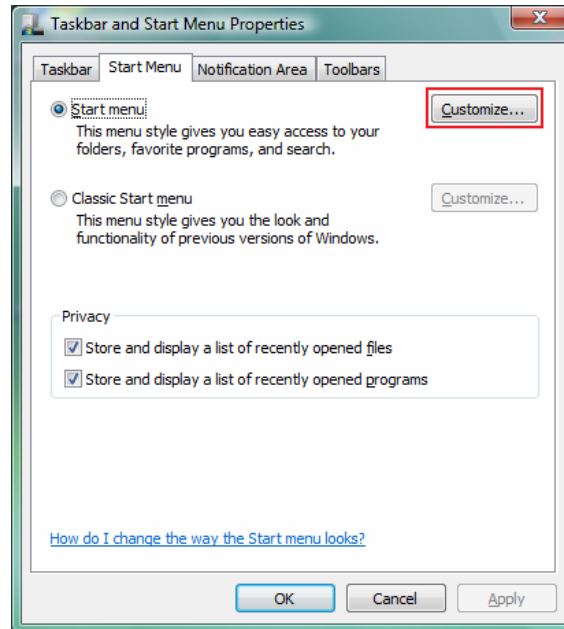
- Once those addresses are added click on the **Advanced** button in the bottom right-hand corner of the screen. Click on the **WINS** tab and uncheck the “**Enable LMHOSTS lookup**” check box and change the Net-Bios setting from Default to “**Disable NetBios over TCP/IP**”.



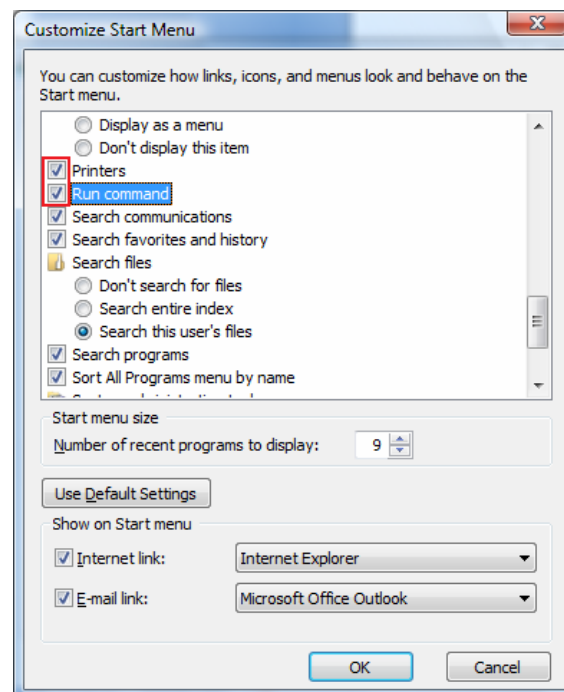
- Click **OK** three times until it hour-glasses for a little bit and then you should see your local area connection indicate that is connected.

Add the Run Command and Printers to the start menu:

- Right-click the **Start Orb** and click “**Properties.**” In the start menu tab click the “**Customize**” button.



- Check the “**Run Command**” and “**Printers**” boxes and click **OK**.



Fix the New Program Window so that the QuickReport will automatically come to the front when launched. This is per the Microsoft Knowledge Base article #886217:

To resolve this issue, modify the value of the ForegroundLockTimeout registry entry in Registry Editor. To do this, follow these steps:

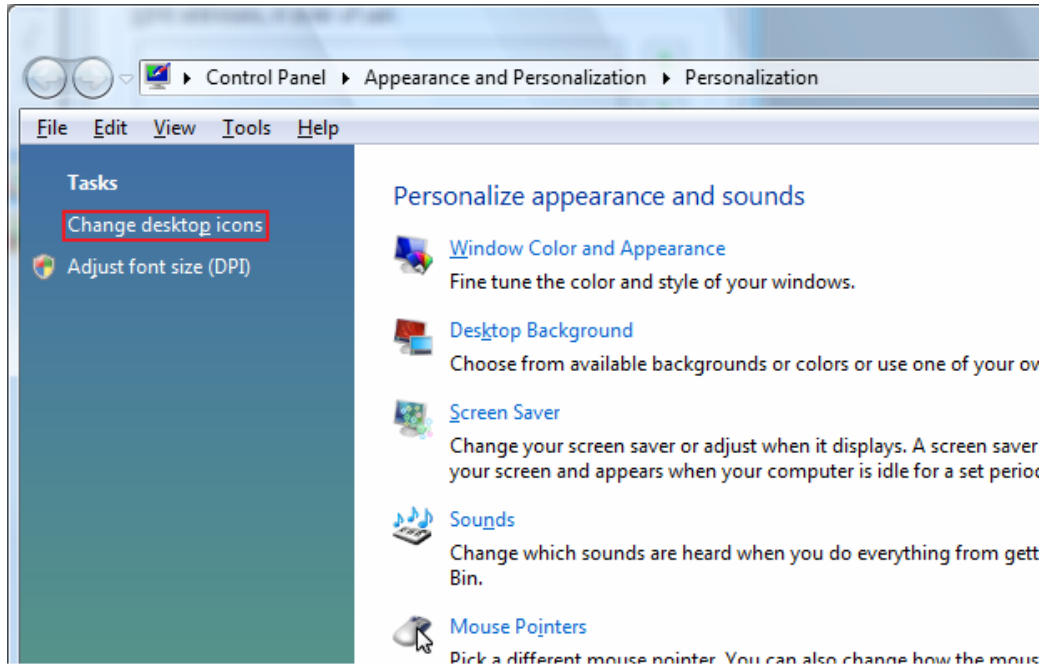
- 1 Click the **Start Orb**, click **Run**, type **regedit** in the **Open** box, and then click **OK**.
- 2 In Registry Editor, locate and then click the following registry subkey:
HKEY_CURRENT_USER\Control Panel\Desktop
- 3 In the right pane, locate and then double-click **ForegroundLockTimeout**.
- 4 Under **Base**, click **Decimal**, type **0** in the **Value data** box, and then click **OK**.

Note The default decimal value for the ForegroundLockTimeout registry entry is set as **200000**.

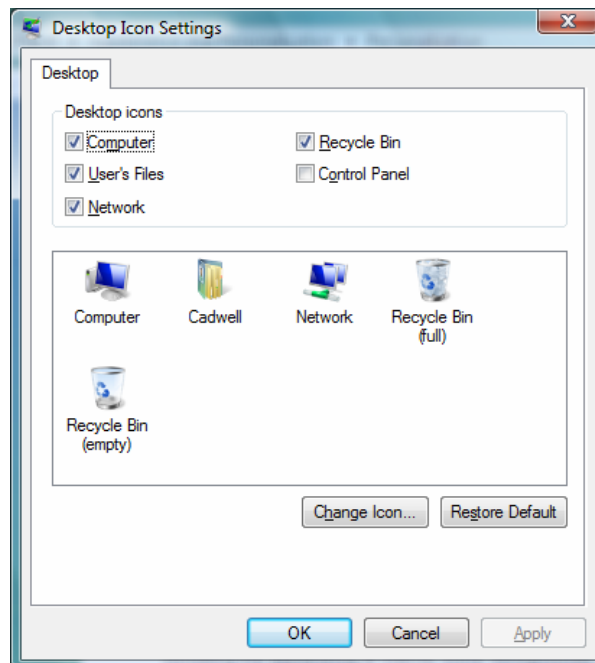
- 5 Quit Registry Editor.
- 6 Restart your computer.

Add the “Computer” and “Network” icons to the desktop:

- Right-click on the desktop and click **Personalize**.
- Click on “Change Desktop Icons” under Tasks.

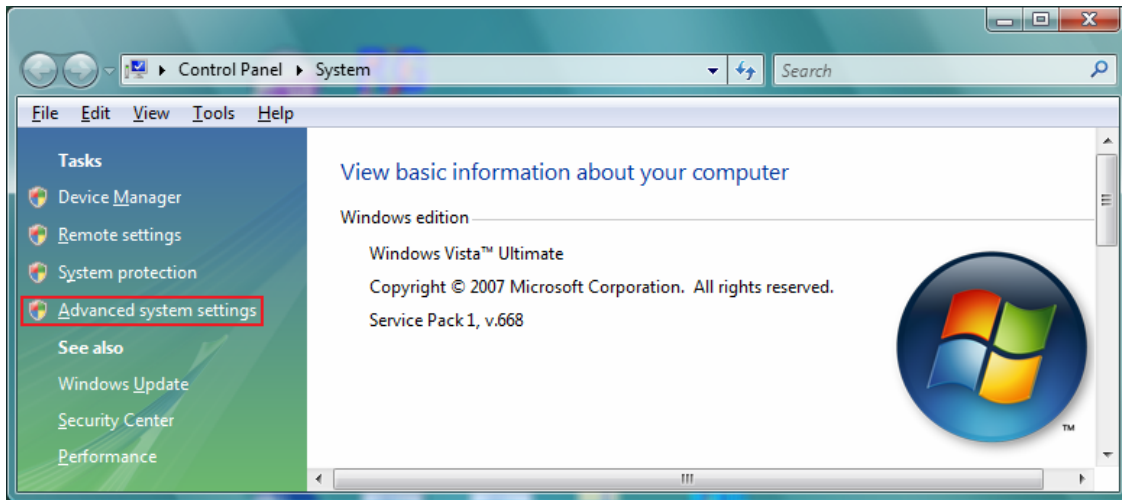


- Check all the boxes, for the available icons. (or at least check **Computer** and **Network**).

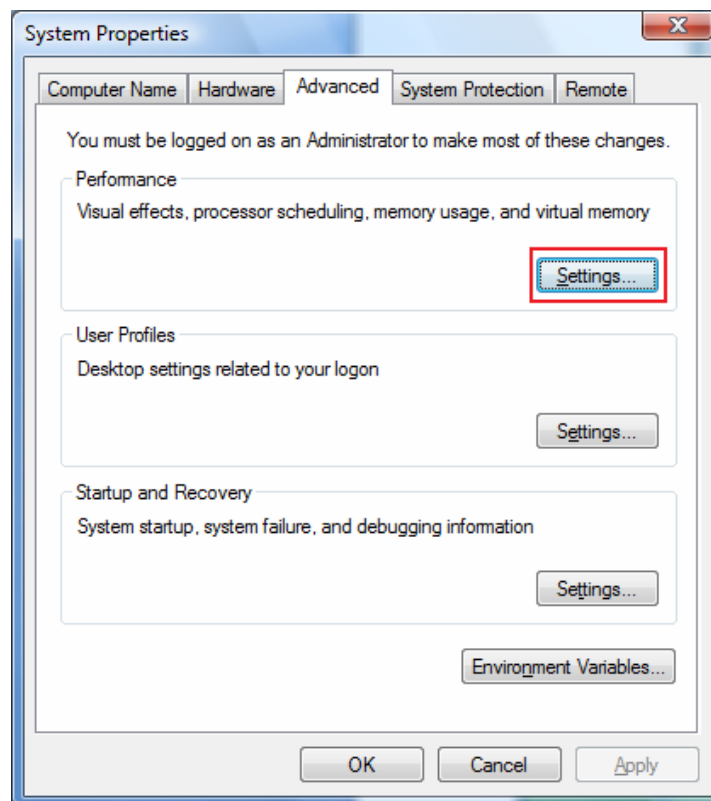


Disable the animation controls and elements within windows:

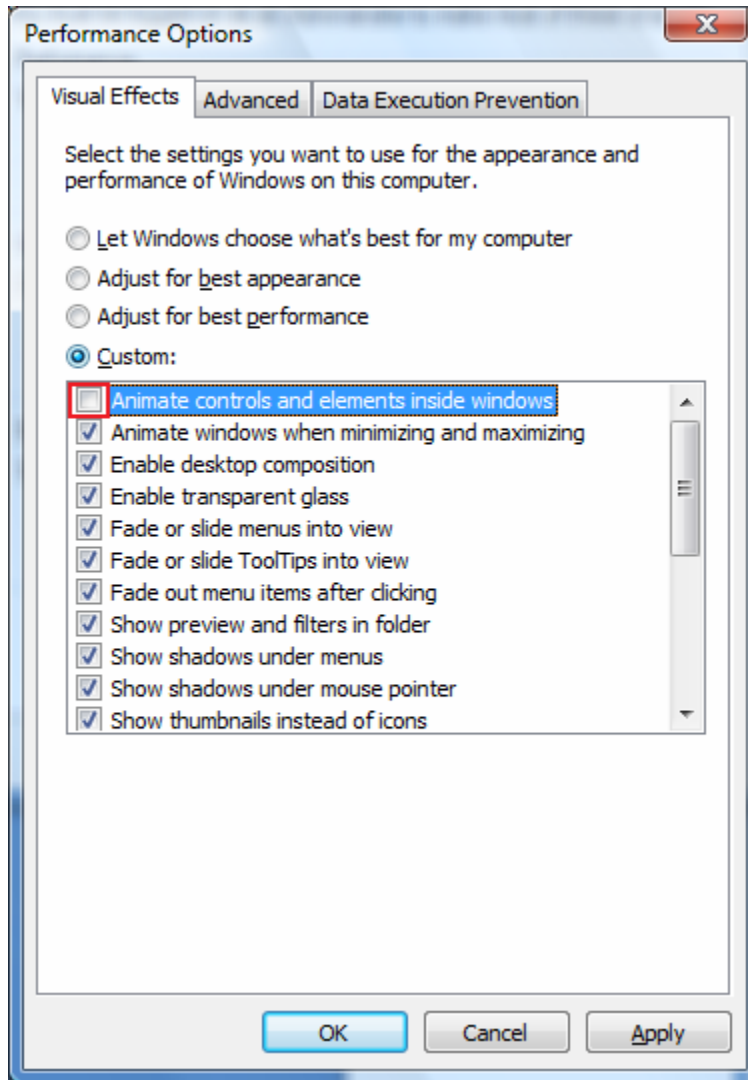
- Right-click on the **Computer icon** and click **Properties**, then click on the “**Advanced System Settings**” link.



- Click on the **Advanced tab**, then the **Settings** button in the **Performance** section.



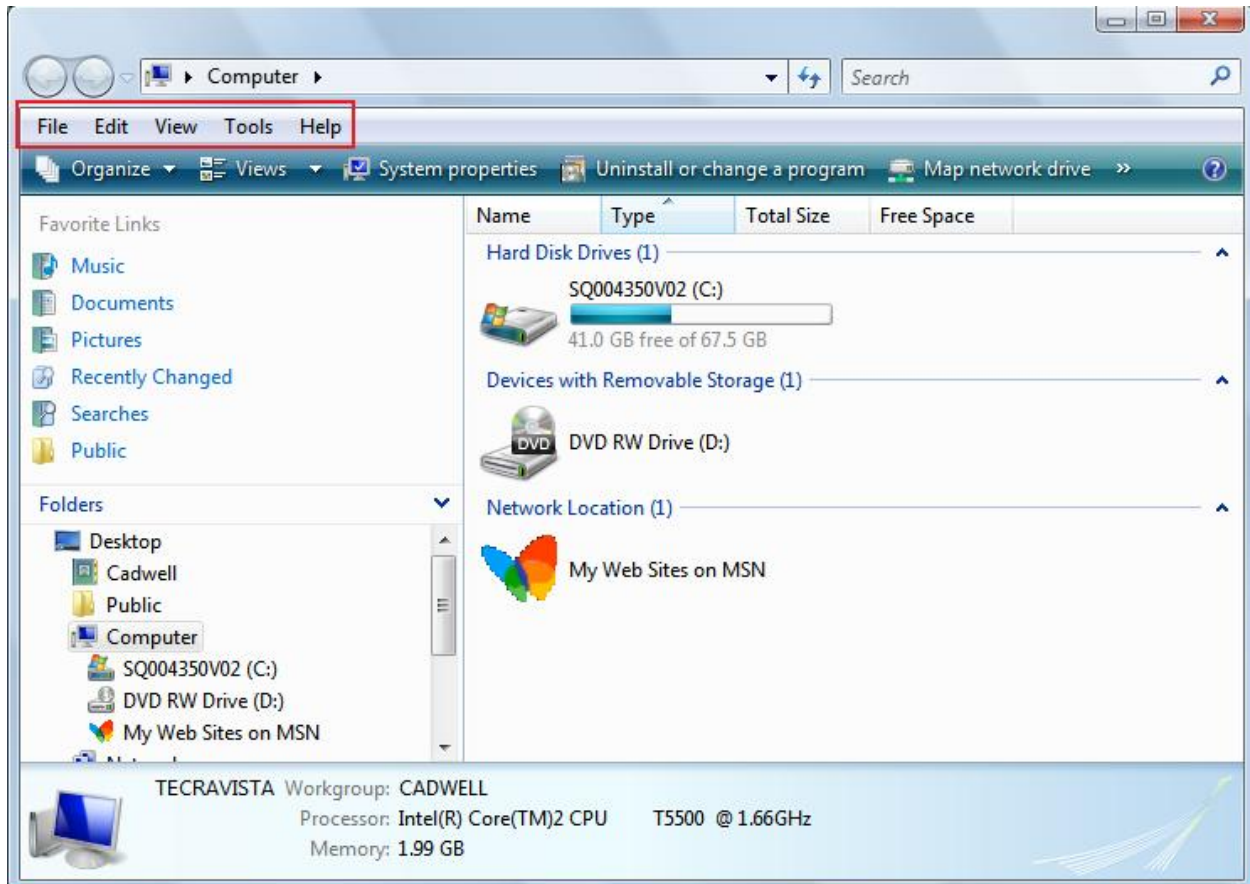
- This will bring up the dialog box that will turn off the animations of buttons. Uncheck the top check box named “**Animate controls and elements inside windows.**”



- Once that is done click **Apply** and **OK** out of everything.

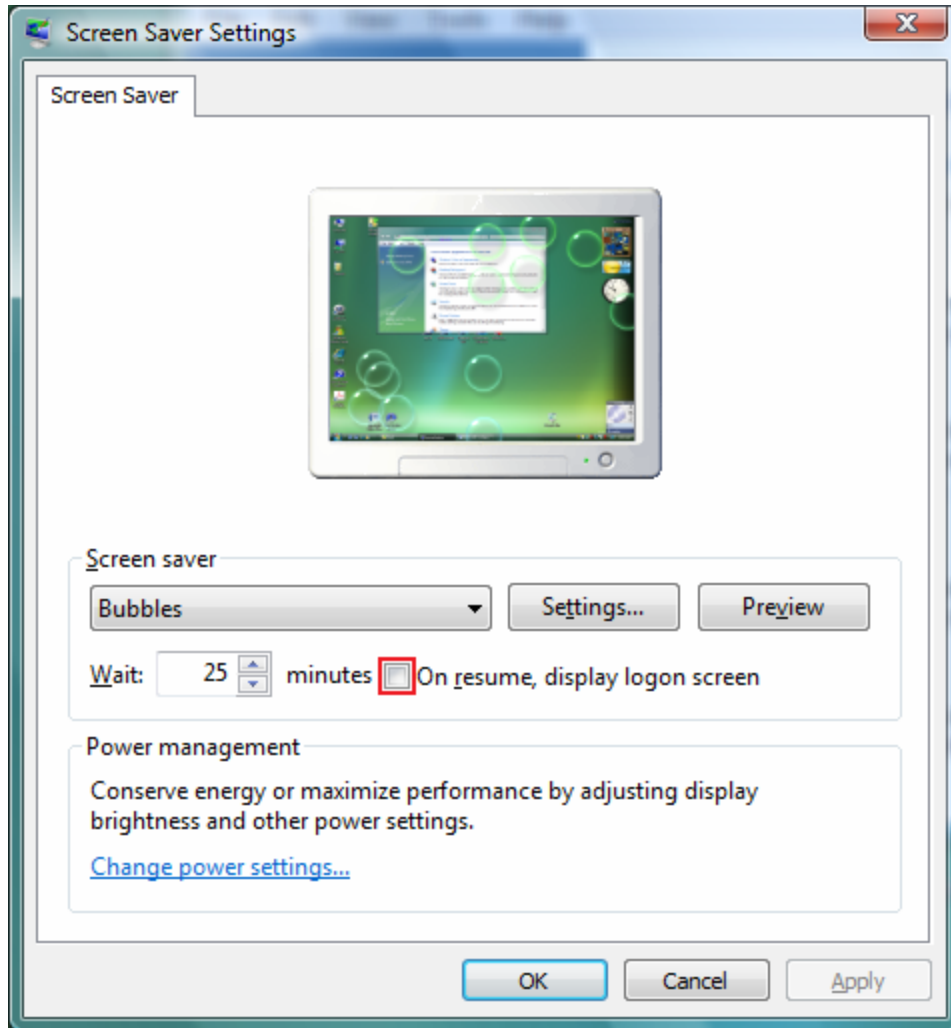
Enable the Menu Bar in the Explorer window:

- Double-click “**Computer**” then click “**Organize**” then hover over “**Layout**” then click on “**Menu Bar.**”
- The File, Edit, View, Tools and Help dropdowns should now be visible.



Disable password protection on Screen Saver:

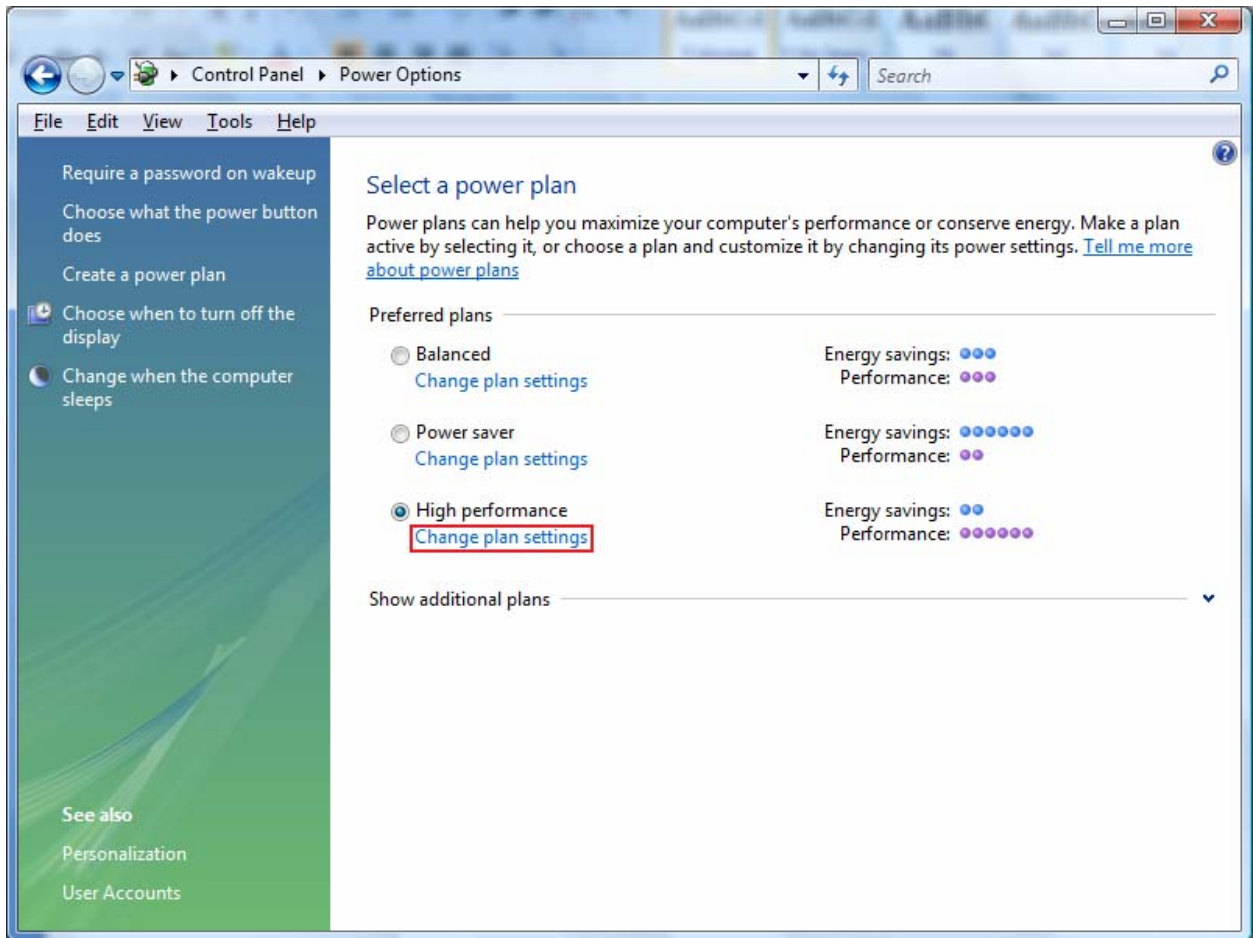
- Right-Click anywhere on the desktop and click **“Personalize.”** Click on the **Screen Saver** link.



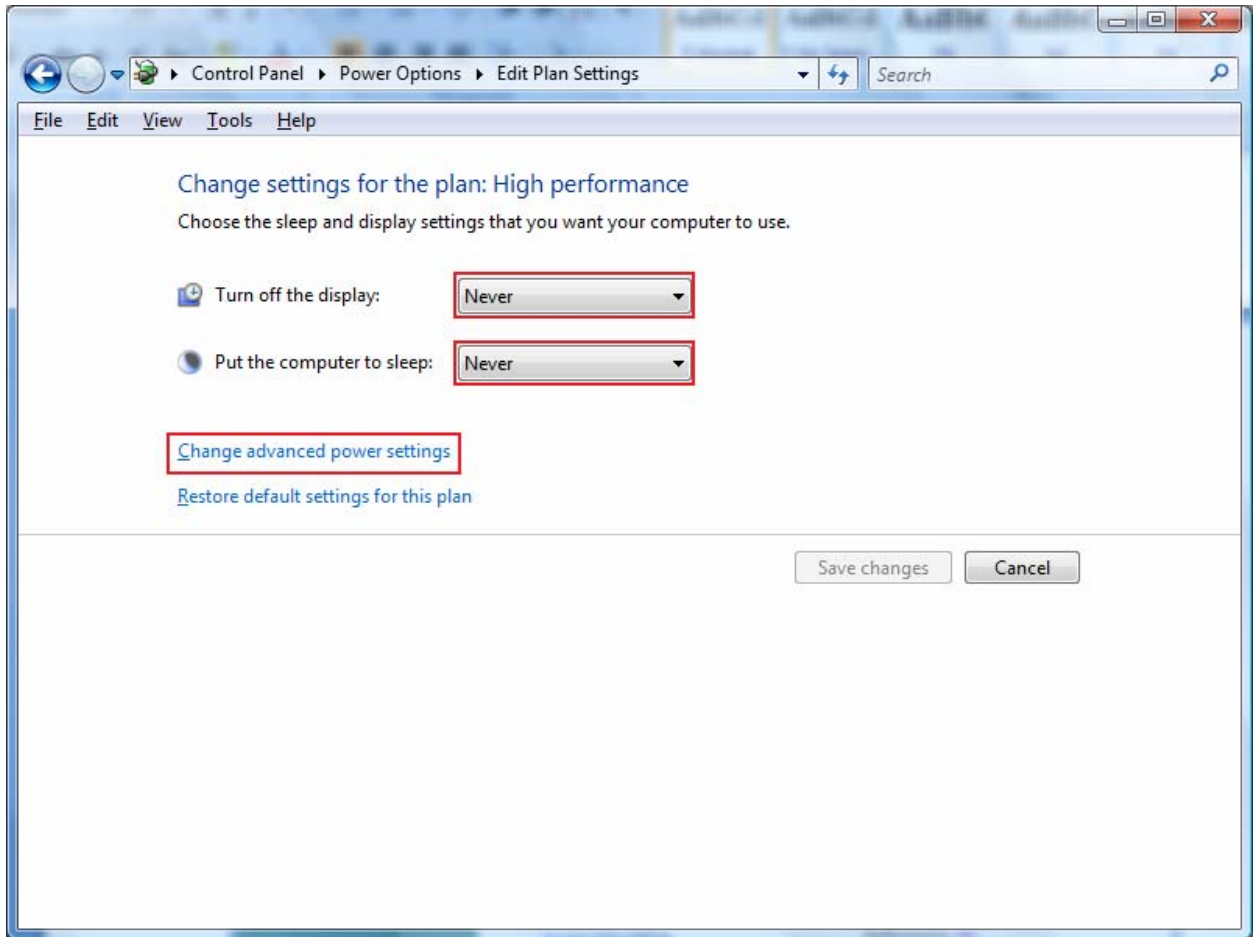
- Then uncheck the **“On resume, display the logon screen”** and click **OK**.

Configure the Power Settings for a Laptop or Desktop:

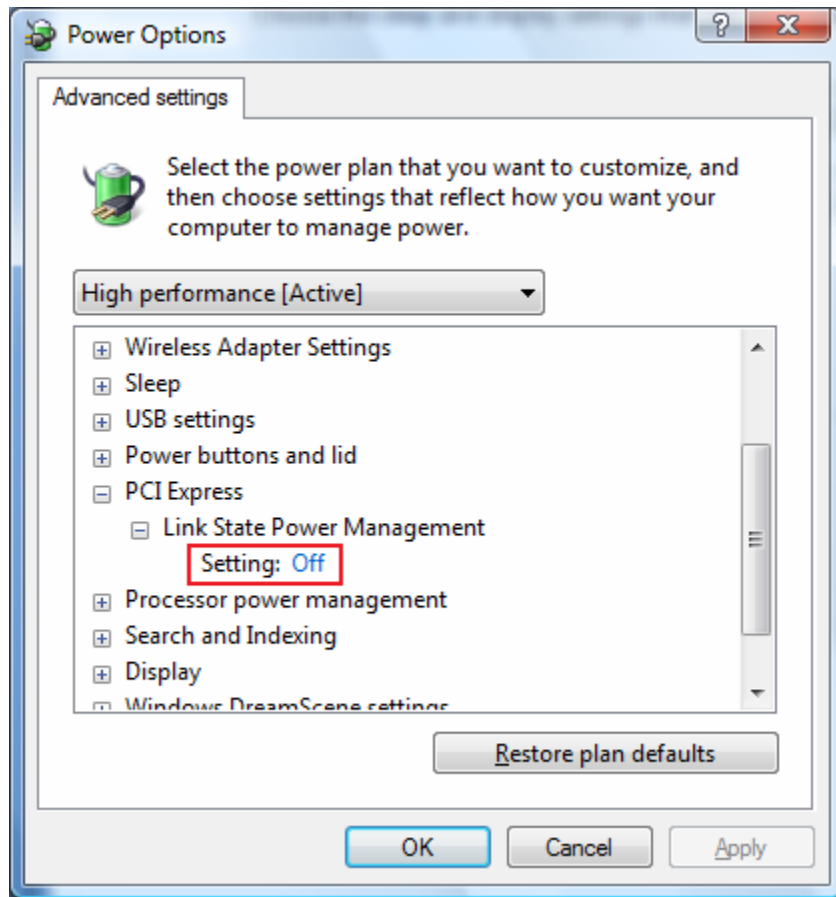
- Click on the **Start Orb**, then **Control Panel**. In the control panel list click on the **“Power Options”**.
- Select the **High Performance** option.



- Click on the **“Change Plan Settings”** link under High Performance.



- Click the dropdown list for both “**Turn off the Display**” and “**Put the Computer to Sleep**” and set them to **NEVER**.



- Next click the “**Change Advanced Power Settings**” link and set the “**Link State Power Management**” setting to **OFF**. That only needs to be done under the **PCI Express** setting. Then click **OK** out of everything to set all the power settings.