


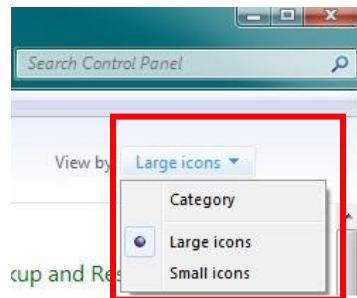
Configuring Windows 7 for Sierra II Wedge

This document will describe how to setup Windows 7 for optimal performance of the Sierra II Wedge program, please configure Window 7 as outlined in the following instructions.

Also note that the Sierra II Wedge program WILL NOT install on a computer running the Windows 7 64-bit operating system. The Sierra II Wedge program will only install on a computer running the Windows 7 32-bit operating system. (To determine if your computer is running the 32-bit or 64-bit operating system; right click on the Computer icon on the desktop and select properties. This information will be displayed on the general tab.)

1. Turn off the UAC (User Account Control) before installing the Sierra II software:

- Click the **Start Orb** .
- Click on the **Control Panel**.
- Change the “**View by:**” to “**Large Icons**” or “**Small Icons**”. *Do not use “Category View”.*




- Then click on **User Accounts**.
- In that dialogue box click on “**Change User Account Control Settings**”. Answer “**Yes**” if a prompt is displayed.

Make changes to your user account


Change your password

Remove your password

Change your picture

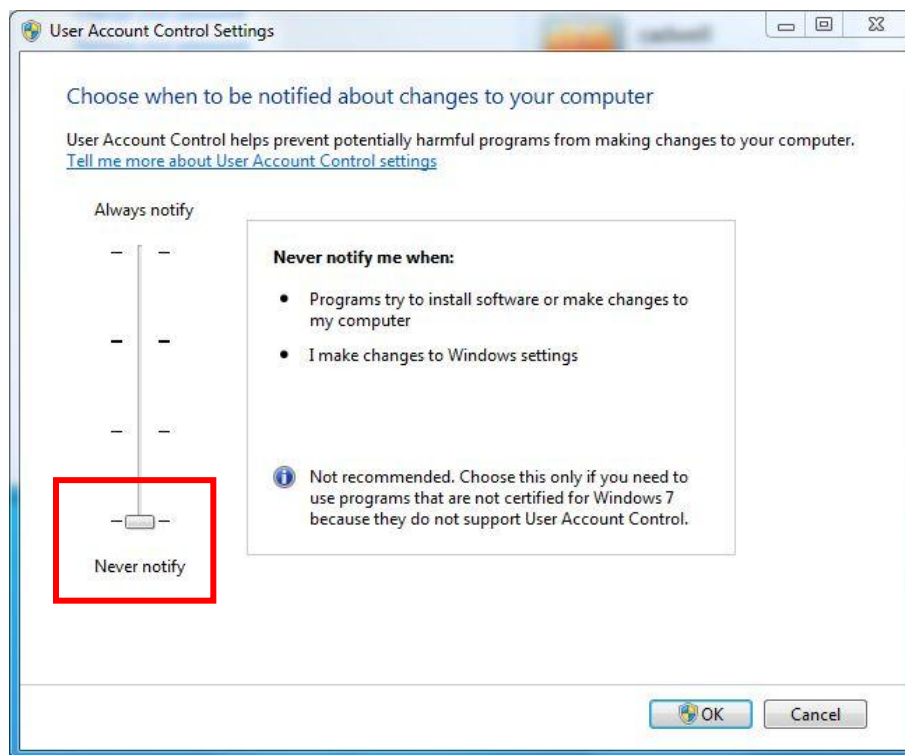
 Change your account name

 Change your account type

 Manage another account


 **Change User Account Control settings**

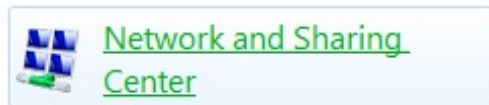
- Move the slider to the “Never Notify” position. Click **OK**.



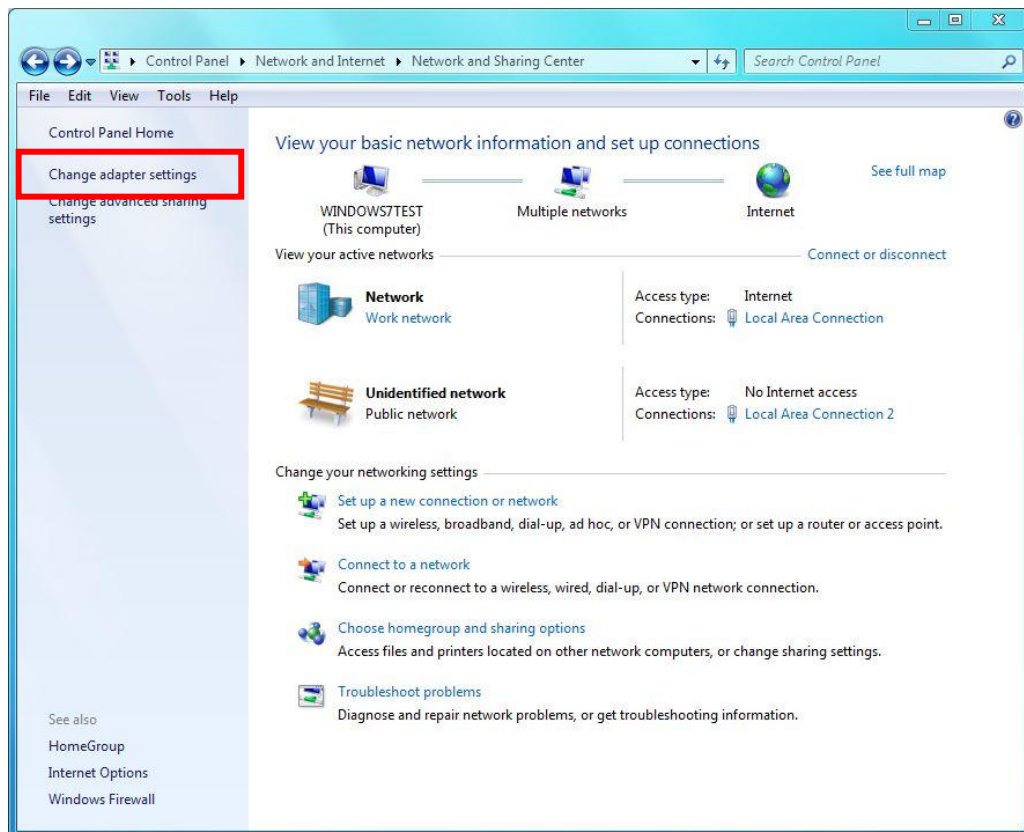
- **Restart** the computer.

2. Configure the Network Card:

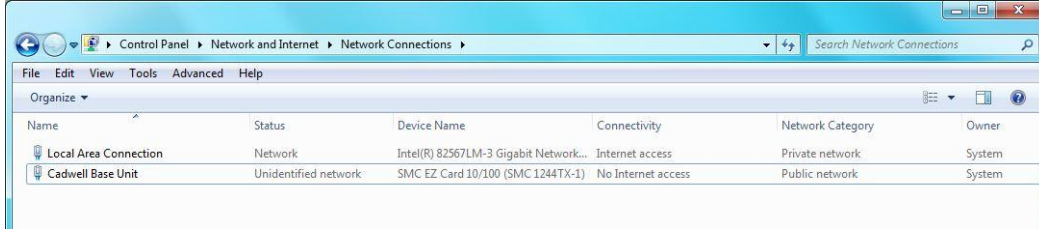
- Click the **Start Orb** .
- Click on the **Control Panel**.
- Change the “**View by:**” to “**Large Icons**” or “**Small Icons**”. *Do not use “Category View”.*
- Click on “**Network and Sharing Center**”.



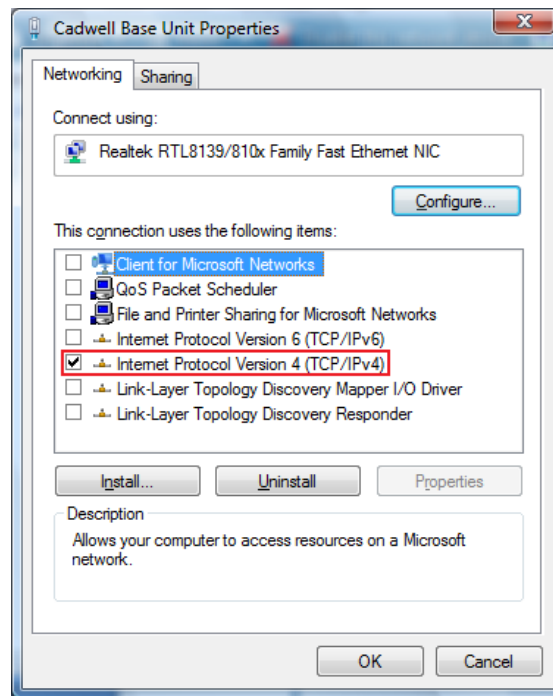
- Then click on “**Change Adapter Settings**” on the left hand task pane. This will show all the network connections available on the computer.



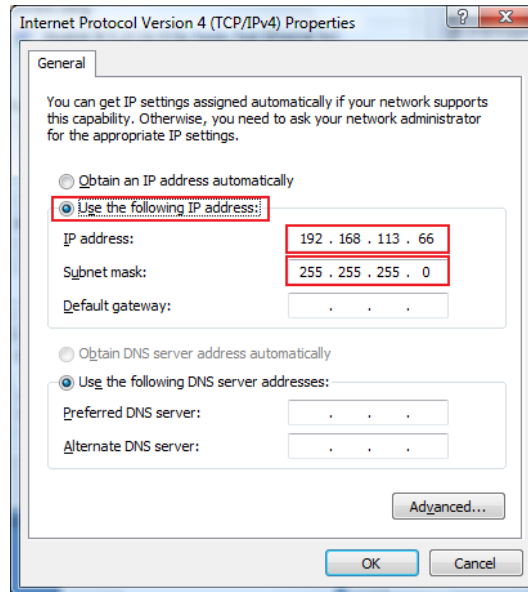
- **Right-click** on the LAN or High-Speed Internet connection that will be used to communicate to the base unit and select **“Properties.”**



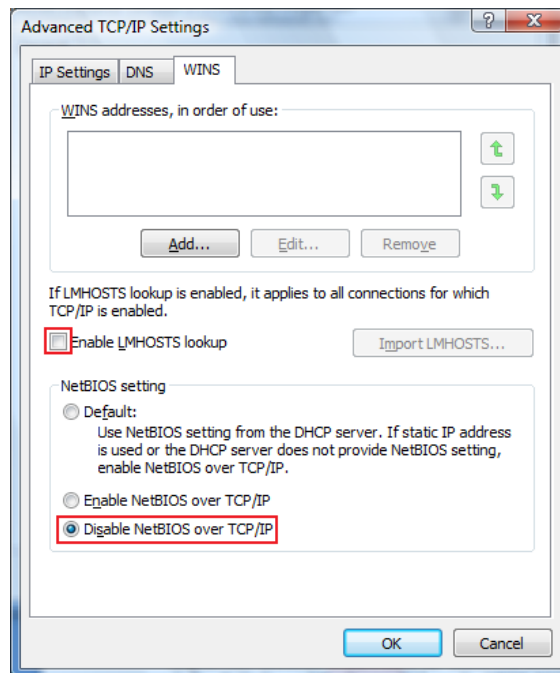
- Uncheck all the protocols in the list except for the **Internet Protocol Version 4 (TCP/IPv4)**.



- Then double-click on that protocol and change the radial button from “Obtain an IP address automatically” to **“Use the following address.”**



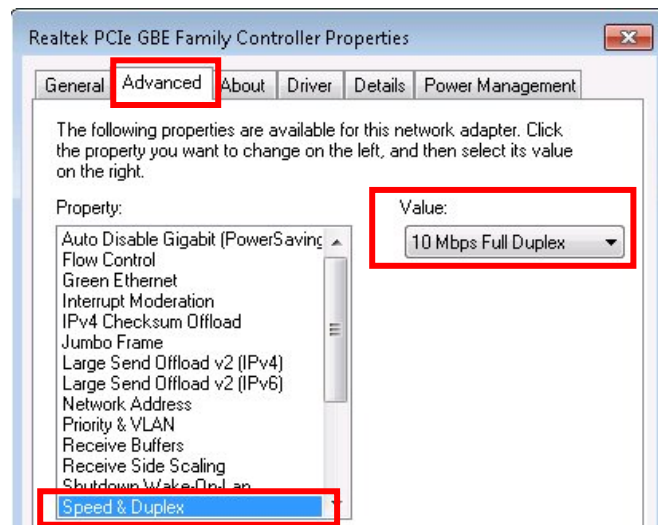
- Input the default Cadwell® IP address. It is **192.168.113.66**. The default Subnet Mask can be used of **255.255.255.0**.
- Once those addresses are added click on the **Advanced** button in the bottom right-hand corner of the screen. Click on the **WINS** tab and uncheck the “**Enable LMHOSTS lookup**” check box and change the Net-BIOS setting from Default to “**Disable NetBIOS over TCP/IP**”.



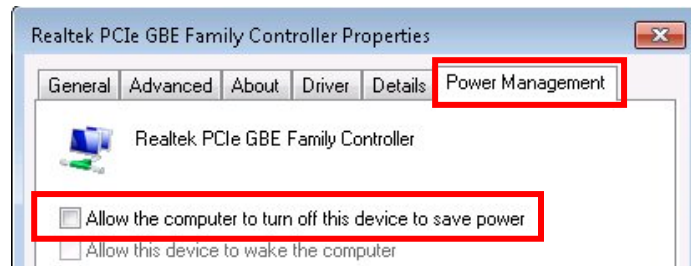
- Click **OK** three times to get back to the network connections page.
- **Once again, right-click** on the LAN or High-Speed Internet connection that will be used to communicate to the base unit and click on **“Properties**.
- Click on the **Configure** button in the upper left corner.



- Click on the **Advanced** Tab then select the **“Speed and Duplex”** listing. *It might also be displayed as “Media Type, Connection Type or Link Speed & Duplex”. Some Windows 7 systems will have a Link Speed tab.*



- Click the drop down list on the value right and select **10 Mbps Full Duplex**.
- Click on the **Power Management** tab. **Deselect the “Allow the computer to turn off this device to save power”** check box than click **OK**. *Note not all network cards will have a power management tab.*

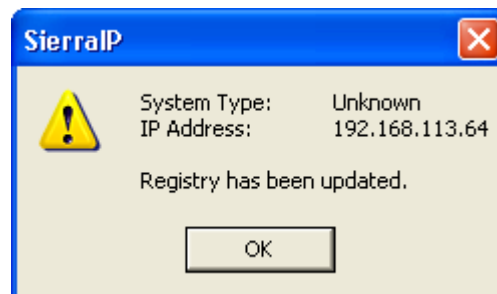


- **Right-click** on the LAN or High-Speed Internet connection that will be used to communicate to the base unit and click on “**Rename.**”Type in **Wedge Base** and press **Enter.**

3. Running SierraIP.exe on Windows 7:

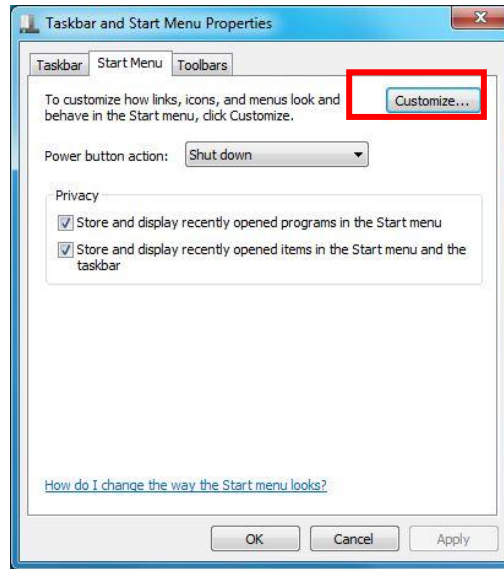
After installation of the Sierra II software has been completed you will need to run the C:\Cadwell\Sierrawin\SierraIP.exe program.

This program updates the system registry with the IP address of the Sierra II Base Unit. See the graphic below for the correct response of running SierraIP.exe. Once this has been done the Network Card Setup will be complete.

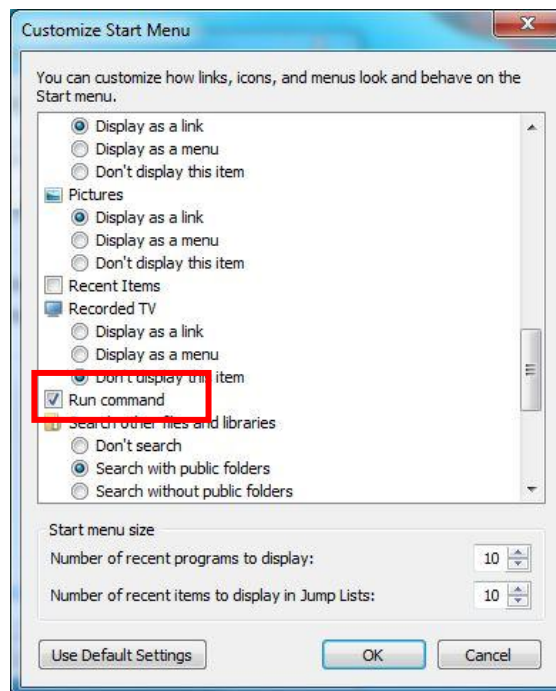


4. Add the Run Command and Printers to the start menu:

- Right-click the **Start Orb** and click “**Properties.**” In the start menu tab click the “**Customize**” button.



- Check the “**Run Command**” and “**Devices and Printers**” boxes and click **OK** twice.



5. Fix the New Program Window so that the ReportGen program will automatically come to the front when launched. This is per the Microsoft Knowledge Base article #886217:

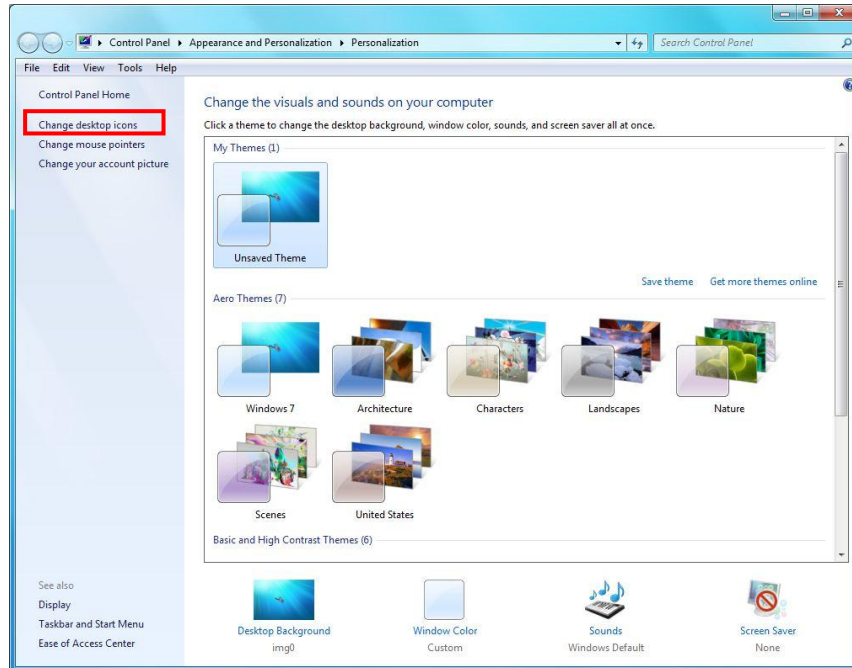
To resolve this issue, modify the value of the ForegroundLockTimeout registry entry in Registry Editor. To do this, follow these steps:

- 1 Click the **Start Orb**, click **Run**, type **regedit** in the **Open** box, and then click **OK**.
- 2 In Registry Editor, locate and then click the following registry subkey:
HKEY_CURRENT_USER\Control Panel\Desktop
- 3 In the right pane, locate and then double-click **ForegroundLockTimeout**.
- 4 Under **Base**, click **Decimal**, type **0** in the **Value data** box, and then click **OK**.
Note The default decimal value for the ForegroundLockTimeout registry entry is set as **200000**.
- 5 Quit Registry Editor.
- 6 **Restart** your computer.

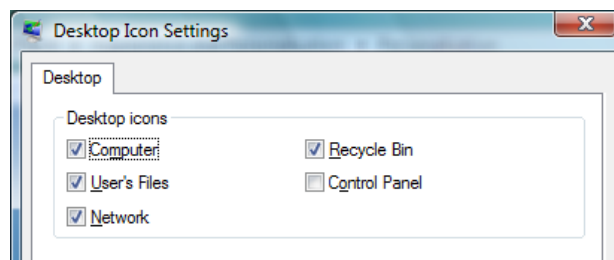
**This must be done for each User Account on the system.*

6. Add the “Computer” and “Network” icons to the desktop:

- Right-click on the desktop and click **Personalize**.
- Click on “**Change Desktop Icons**” under Tasks.

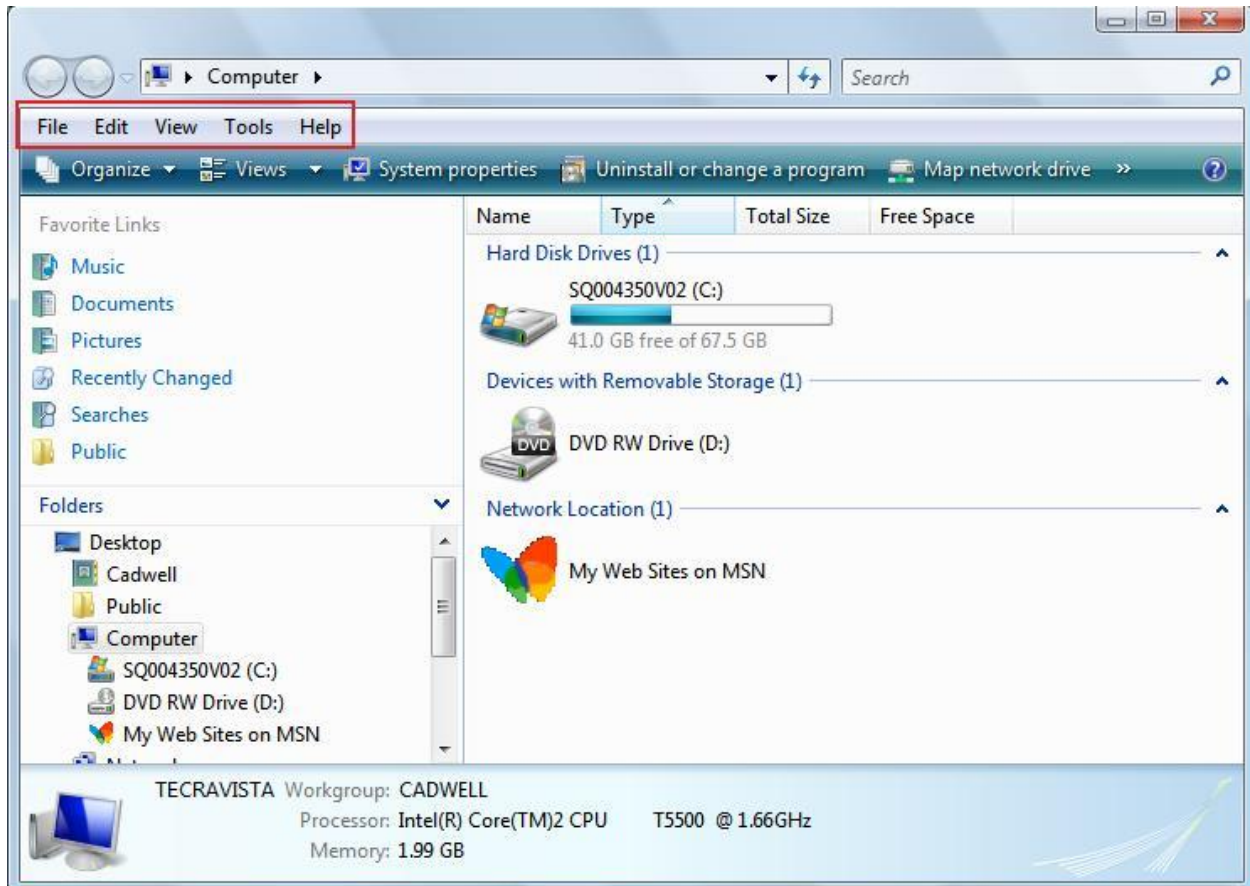


- Check the boxes for the **Computer** and **Network** from the available icons.
- Click **Apply** than Click **OK**.



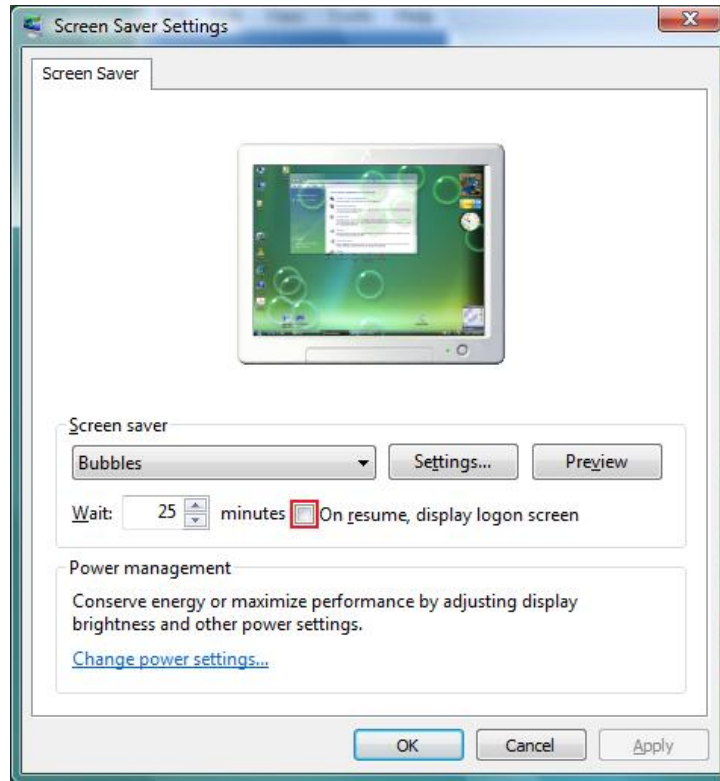
7. Enable the Menu Bar in the Explorer window:

- Double-click “**Computer**” then click “**Organize**” then hover over “**Layout**” then click on “**Menu Bar**.”
- The File, Edit, View, Tools and Help dropdowns should now be visible.




8. Disable password protection on Screen Saver:

- Right-Click anywhere on the desktop and click “**Personalize.**” Click on the **Screen Saver** link in the lower right corner.

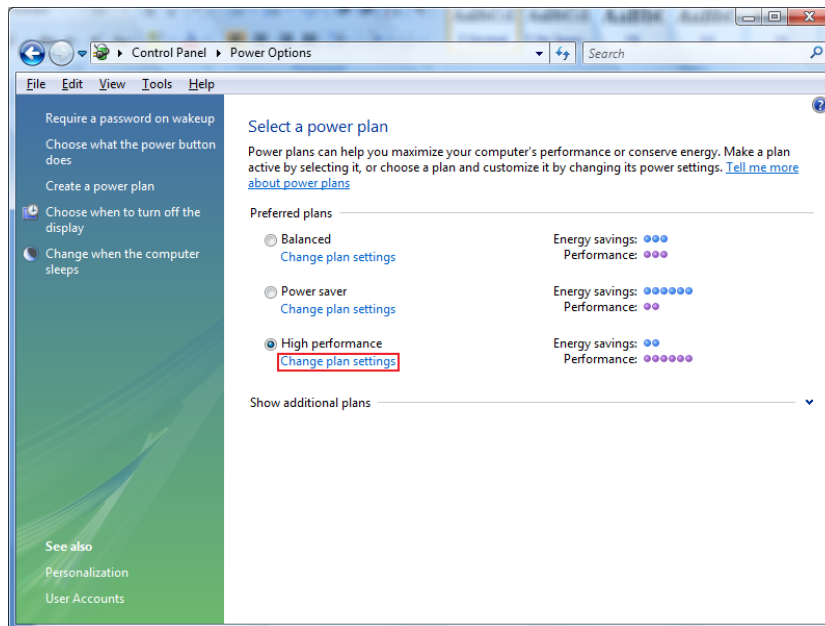


- Then **uncheck** the “**On resume, display the login screen**” and click **OK**.

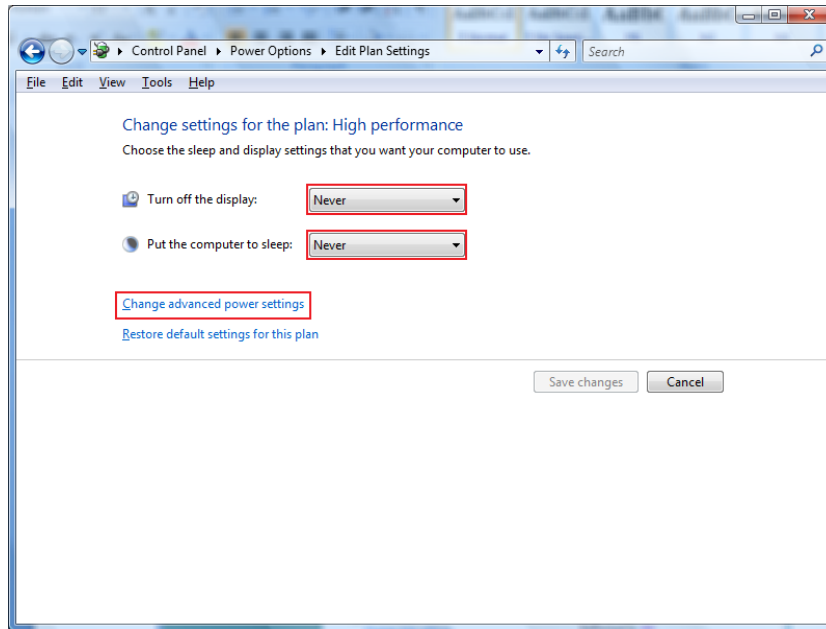
9. Configure the Power Settings for a Laptop or Desktop:

- Click the **Start Orb** .
- Click on the **Control Panel**.
- Change the “**View by:**” to “**Large Icons**” or “**Small Icons**”. *Do not use “Category View”.*
- In the control panel list click on “**Power Options**”.

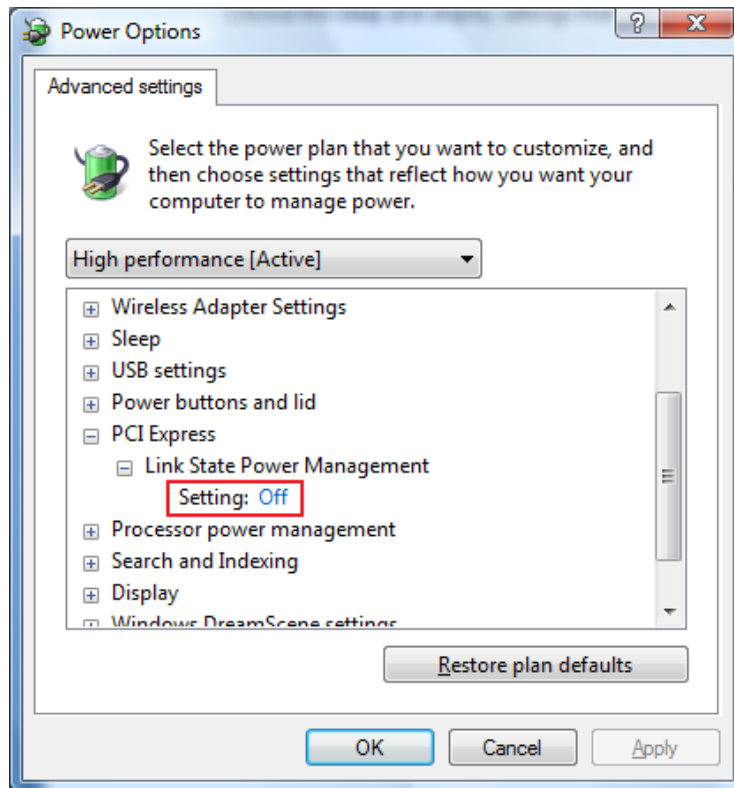
- Select the **High Performance** option. If you don’t see this option, click on Show Additional Plans.



- Click on the “**Change Plan Settings**” link under High Performance.
- Click the dropdown list for both “**Turn off the Display**” and “**Put the Computer to Sleep**” and set them to **NEVER**.



- Next click the “**Change Advanced Power Settings**” link and set the “**Link State Power Management**” setting to **OFF**. That only needs to be done under the **PCI Express** setting. Then click **OK** out of everything to set all the power settings.



10. Show File Extensions

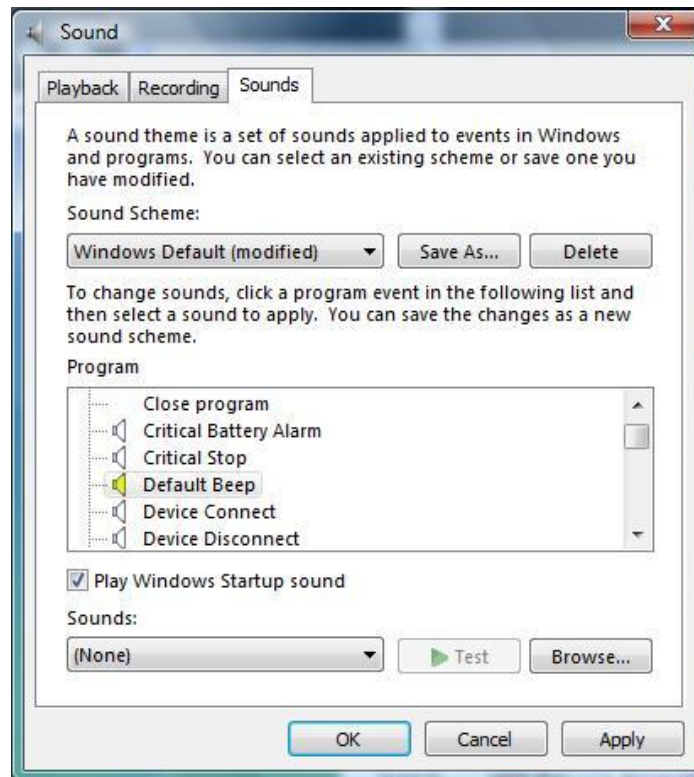


- Click the **Start Orb**.
- Click on the **Control Panel**.
- Change the “**View by:**” to “**Large Icons**” or “**Small Icons**”. *Do not use “Category View”.*
- Click on “**Folder Options**”
- Click on the **View** tab.
- **Uncheck** the box “**Hide extensions for known file types**”.
- Click Apply than **OK**.

11. Turn Off the Windows Default Sound

This will disable the beep sound that is heard whenever Knob #1 is turned.

- Click on the **Start Orb**, then **Control Panel**. In the control panel select the **Sound** icon.
- Click on the **Sounds** tab.
- In the list of program sounds, select the **Default Beep** sound.





TITLE: Configuring Windows 7 for Sierra II Wedge
P/N: 369026-626, Rev 01
AUTHOR: Dave Jensen & Will Bram
DATE: December 22, 2010
PAGE: 16 of 16

- At the bottom of the window, change the sound from **Windows Ding.wav** to **(None)**.
- Click the **Apply** button.
- Click the **OK** button.